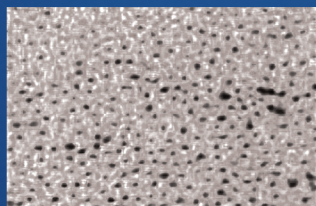


# Clean Up Your Root Canal Workflow

Eliminate steps while  
preserving the best  
care for your patients.

- Optimal smear layer removal
- Superior chelation and enhanced cleansing
- No additional rinse needed when used with NaOCl



**NaOCl + SmearOFF**  
No precipitate  
Open dentinal tubules



**NaOCl + CHX**  
Precipitate occluding  
the dentinal tubules

