



2022-2024 VISTA APEX PRODUCT CATALOG

ENDODONTIC AND RESTORATIVE DENTAL PRODUCTS

Vista Dental was founded in 1997 with a mission to provide innovative solutions for Endodontists and General Dentists alike.

In 2019, Vista Dental acquired Apex Dental Materials, an organization responsible for developing gold-standard restorative dentistry products. This partnership created the robust innovation powerhouse that is Vista Apex.

Now in our 25th year serving clinicians, we strive to provide doctors with even more innovation to make their lives easier and provide better patient outcomes.



VISTA | APEX

Who Is Vista Apex?

Vista Apex is a market leader in Endodontic and Restorative solutions. Vista Dental, having been a market leader in Endodontic Solutions was looking to apply their chemical and biomedical expertise to its restorative line. With the acquisition of Apex Dental Materials, an innovation powerhouse was formed. Together, the Vista Apex team has a passion for being a trusted partner who provides quality solutions for our Clinicians.



Our Product Development team has over a century of combined biomedical, chemical engineering and Dental Industry experience. Our mission is working with and innovating for Clinicians, to achieve better patient outcomes.

We are guided by our four pillars of innovation.

- **Clinician Involvement** – Partnering with respected Clinicians is at the forefront of the Vista Apex Innovation strategy. Our Chief Dental Officer has partnered with some of the brightest clinicians in Dentistry to create a Clinical Advisory Panel that helps steer our innovation pipeline.
- **Operational Excellence** – Our relentless pursuit of Operational Excellence positions Vista Apex to harness the power of agile product development and ensure optimal quality standards.
- **Industry Expertise** – Backed by over a century of combined success in the Dental Industry, our team is poised to understand your needs as they evolve.
- **Quality Engineering** – From product design to distribution, quality engineering is at the core of our business. Our meticulous attention to detail and commitment to constant improvement create an environment for superior results.

At Vista Apex, we dream big and work hard toward our vision to make Dentistry better for everyone.

Ordering Is Easy!

Order anytime through your favorite dealer, or simply follow the process below to order directly from Vista Apex. **FREE SHIPPING for direct orders over \$400*!**



Scan The
QR Code



Visit Our
Website



Register For
An Account



Build Your
Shopping Cart



Checkout &
Shipping

* Free shipping amount subject to change. Domestic shipping only. See vistaapex.com for the latest terms and conditions.

BONDING & ETCHING 7

COMPOSITES & CEMENTS..... 17

ENDODONTICS 23

EVACUATION 31

EQUIPMENT 37

IMPACT AIR® EQUIPMENT 41

PIEZO ULTRASONICS 45

PREPARATION..... 51

TIPS & SYRINGES..... 53

TISSUE MANAGEMENT..... 61

WHITENING 65

ACCESSORIES 67

INDEX..... 73

2200 South Street, Racine, Wisconsin 53404

Toll-Free: 877.418.4782 | Business: 262.636.9755

Fax: 262.636.9760 | Email: info@vista-dental.com

vistaapex.com



Follow Us:



Innovative Solutions

At Vista Apex, our aim is to create innovative products, made by clinicians for clinicians, to improve efficiency and ensure better overall oral healthcare for their patients. These products make performing dental care procedures easier and more predictable, which translates into trusted patient relationships and helps to build and optimize your practice.

We are proud of our endodontic and restorative product heritage. We have 25 years of combined industry experience of providing materials clinicians have trusted and continued to use as part of the growth and development within their patient care protocols.

Our innovation legacy continues with groundbreaking dental product developments, including the dental industry's first bioactive restorative line (the RE-GEN™ product family). Our Engineering, Clinical Research and Product Development teams continue to raise the standards by developing new solutions in the endodontic and restorative fields, while hand-in-hand producing state-of-the-art equipment (our Patented PinkWave™ QuadWave Curing Light).

We are deeply humbled and privileged by the recognition we have received from our peers for the advancement of better patient care and clinical outcomes.



Scott Lamerand,
CEO



Dr. Michael Miyasaki,
CDO

Scott Lamerand, CEO

Dr. Michael Miyasaki, CDO

Recent Product Awards

Vista Apex has a long history of earning coveted awards in the dental industry. Here's just a small sample of some of our recent awards. Check out our website for the most up-to-date listings!



RE-GEN™

2021 Stevie
Award Winner



PinkWave™

2021 Stevie Award Winner &
2020 Cellerant Award Winner



Velvet Etch™

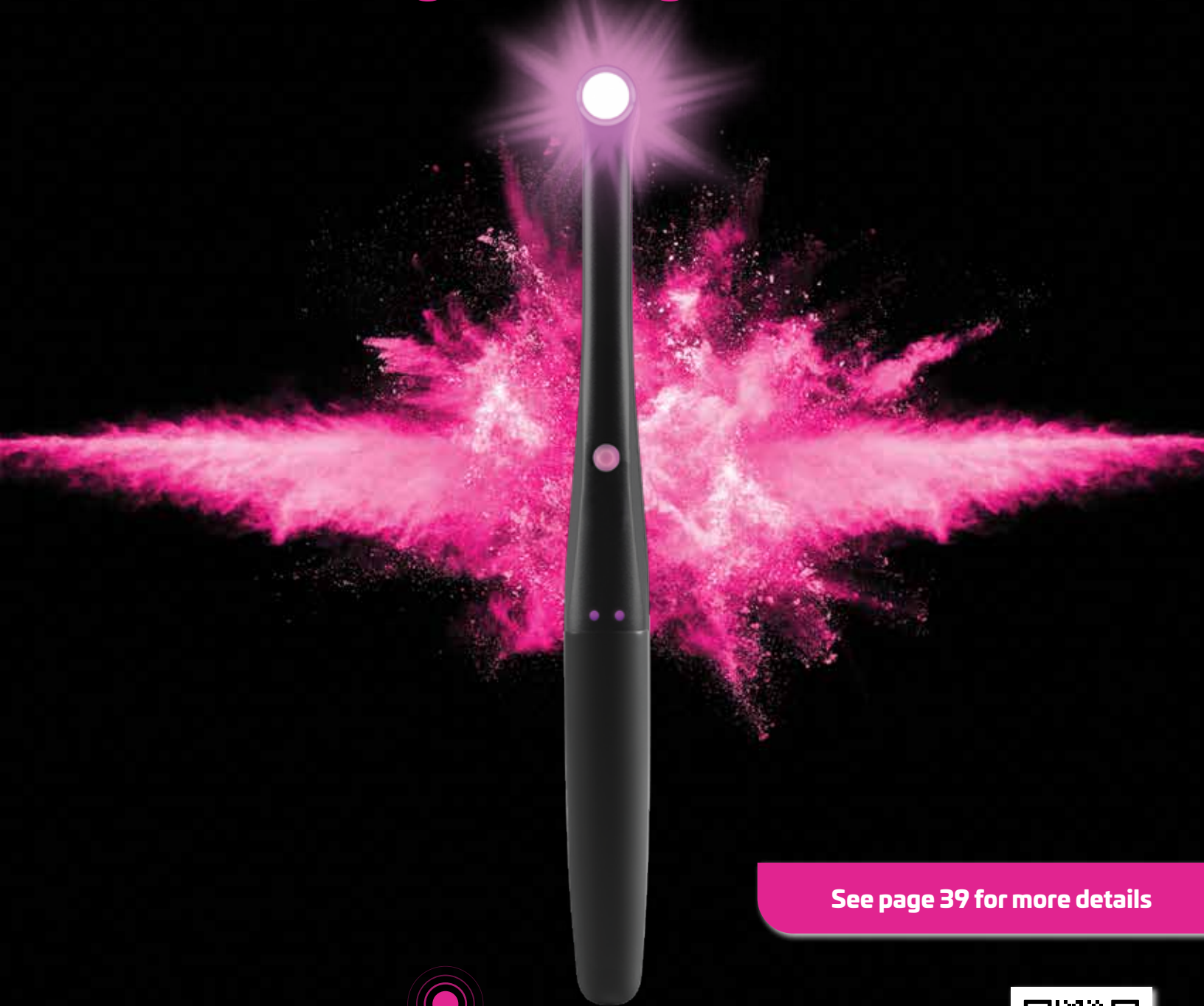
2021 DPR Top 100 -
Restorative Products



Clean & Boost®

Dental Product Shopper
Best Product

light curing
evolved



See page 39 for more details


pinkwaveTM
QuadWaveTM Curing Light



Goodbye Blue, Hello Pink

PinkWave™ was distinctly designed to enhance the efficacy of curing procedures. PinkWave™ is equipped with Vista Apex's Patented QuadWave™ Technology which leverages four different wavelengths to ensure peak performance. Along with the standard blue light, PinkWave™ also employs red, near infrared (NIR) and UV light, which make up the only pink curing light on the market. This innovative approach to curing has never been achieved before and results in both doctor and patient benefits.

- Built in Transilluminator
- 3 curing modes — Boost, Standard, and Ramp
- 1515 mW/cm² on Standard mode and 1720 mW/cm² on Boost mode



Reduced Composite Shrinkage



More Forgiving



Largest Curing Light Curing Area on the Market



Up to 8.5mm Depth of Cure



Produces Less Heat Than Leading Competitors



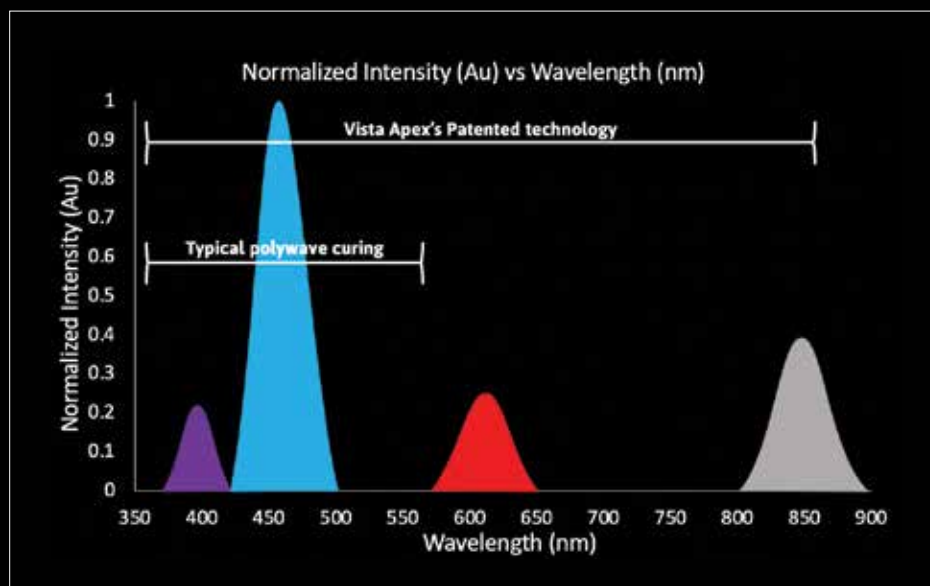
Lightweight: Only 88g

How You Cure Matters

quadwave™
Technology

PinkWave™ QuadWave™ Technology leverages four different wavelengths to ensure peak performance:

- UV-photo Initiators
- CQ Initiator
- Enhanced Polymerization
- NIR – Enhanced Polymerization



3 Year Warranty

QuadWave™ the Future

Decreased Shrinkage

PinkWave™ utilizes QuadWave™ technology to provide more efficient polymerization, and less composite shrinkage than traditional blue LED curing lights. By incorporating Near Infrared light, PinkWave™ shows superior performance across a variety of composite materials.



Decreased marginal staining, lower chance of microleakage and secondary caries



Reduced patient post-operative sensitivity



PinkWave™ 12.1mm

Increased Polymerization

PinkWave™ was designed to deliver the power you need, regardless of how consistent you are with distance from the restoration. Most curing lights are designed to deliver maximum power at 0mm from the surface of the restoration, which is not clinically likely. Vista Apex designed PinkWave™ with real-life situations in mind.



Harder restoration and greater wear resistance

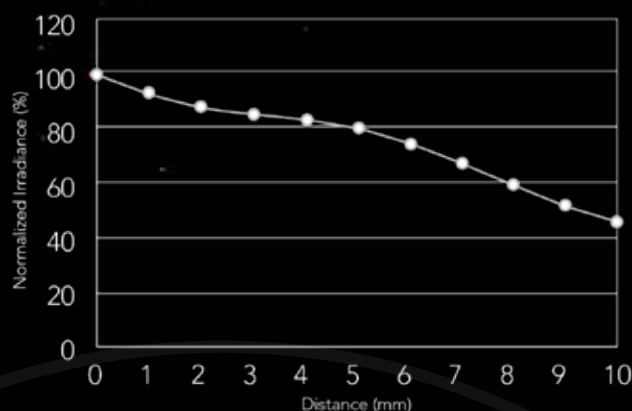


Less microleakage and water absorption

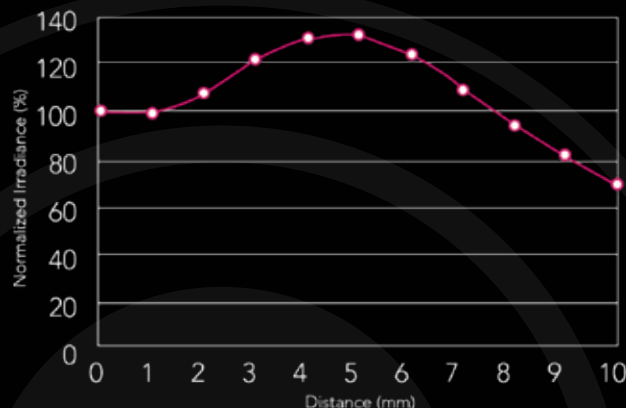
Depth of Cure

PinkWave™ was designed to deliver the power you need, regardless of how consistent you are with distance from the restoration.

VALO™ Grand



PinkWave™



Largest Curing Area



PinkWave™
113 mm²



VALO™* Grand
107 mm²



VALO™*
78 mm²



Valiant™*
44 mm²



Bluephase*
41 mm²

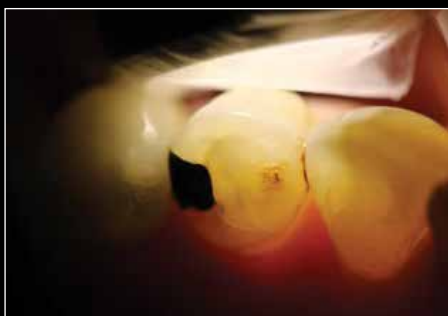


SmartLite*
38 mm²



Celalux®* 3
36 mm²

Transilluminator



Easy posterior access



Ordering Information

PinkWave™ Kit 90734 KIT

- (1) Cordless Curing Light
- (1) Induction Charging Base
- (1) Power Cord
- (5) Autoclavable Light Shields
- (100) Disposable Barrier Sleeves
- (3) Pair of Protective Eyewear



See page 39 for more details

* VALO™ is a registered trademark of Ultradent® Products, Inc. Valiant™ is a trademark of Inter-med, Inc.
Bluephase® is a registered trademark of Ivoclar Vivadent Inc. SmartLite® is a registered trademark
of Dentsply Sirona. Celalux® is a registered trademark of VOCO GmbH.



BONDING & ETCHING

Vista Apex offers a complete line of products for adhesive dentistry, including the world's first Bioactive Adhesive, RE-GEN™. Our suite of etchants, primers, bonding agents and desensitizers have been developed to offer superior results.

- RE-GEN™ Adhesives
- Superb Universal Adhesive
- Surpass® Self-Etch Adhesive System
- Simplicity Self-Etch Adhesive System
- ZR-P™ Zirconia Primer
- Interface Ceramic Primer
- ZR-C™ Zirconia Cleanser
- Bondsaver
- CHX Restorative
- Clean & Boost®
- Best-Etch™
- Velvet Etch™
- Porcelain Etch
- DesensiMAX

Bonding & Etching

FEATURED PRODUCT



RE-GEN™ Universal Adhesive

RE-GEN™ Universal Adhesive provides consistent results, exceptional bonding and virtual elimination of post-operative sensitivity in a single system.

RE-GEN™ is the first line of bioactive products to employ Bioglass as an active ingredient. Bioglass is backed by 50+ years of medical use, and is supported by scientific research and countless clinical studies. Studies have shown Bioglass to form a hydroxyapatite-like surface which promotes the regeneration of healthy tooth structure.

- Targeted Bioactivity – Ionic release at the resin-dentin interface
- Osteogenic – Stimulates regeneration of hydroxyapatite
- Preventative – Alkaline pH aids in the prevention of secondary caries
- Biocompatible – BPA-Free, patient friendly non-toxic compatibility



PRODUCT	SKU
Universal Adhesive Kit	90637
<i>Includes:</i> (1) 4mL bottle, (50) applicator brushes, (1) single-cavity mixing well, (2) 1.2mL syringes of Clean & Boost Gel, (8) Stat-Flo™ brush tips	
(1) 4mL Universal Adhesive Refill	90638



Superb Universal Adhesive

Superb Universal Adhesive combines etchant, primer and bonding resin into a single bottle. The combination of components and reduction of steps within the application protocol has led to an extremely consistent, easy to apply, bonding system with little to no technique sensitivity.

Superb is recommended for all classes of direct restorations and indirect restoration delivery.



PRODUCT	SKU
Starter Kit	SDL17
<i>Includes:</i> (1) 4mL bottle, (50) applicator sticks, (1) single-cavity well	
(1) 4mL Refill Kit	SDL18
(50) Applicator Sticks	90339



RE-GEN™ Self-Etch Adhesive

If you prefer a self-etching technique, but want the benefits of a bioactive adhesive, look no further than RE-GEN™ Self-Etch. This three bottle system will provide superior bond strength along with the benefits of Bioglass.



PRODUCT	SKU
Self-Etch Kit	90632
<i>Includes:</i> (1) 6mL bottle of each step, (3) boxes of 25 applicator brushes, (1) single-cavity well	
Self-Etch Refill	90633
<i>Includes:</i> (1) 6mL bottle of each step	
(1) 6mL RE-GEN Self-Etch Step 1	90634
(1) 6mL RE-GEN Self-Etch Step 2	90635
(1) 6mL RE-GEN Self-Etch Step 3	90636

FREE STANDARD SHIPPING ON ORDERS OVER \$400 | CALL TOLL FREE 877.418.4782 OR VISIT VISTAPEX.COM

Bonding & Etching

FEATURED PRODUCT



Surpass® Self-Etch Adhesive System

Independently, each SURPASS® bottle optimizes an attribute critical to clinical success. When used as a system, SURPASS® is the Gold Standard in dental adhesion.

- Bottle 1 (conditioner) etches enamel as well as phosphoric acid while eliminating post operative sensitivity
- Bottle 2 (primer) completely penetrates and thoroughly primes all tooth structures to maximize dentin penetration and provide superior bond strengths
- Bottle 3 (bonding resin) seals the tooth and links the primed surface to all self-cure, dual-cure or light-cure restorative materials
- Only one technique for all procedures
- No catalysts needed



PRODUCT	SKU
Starter Kit	90000
<i>Includes: (1) 6mL bottle of Surpass® 1, (1) 6mL bottle of Surpass® 2, (1) 6mL bottle of Surpass® 3, (3) boxes of 25 color coded applicators, (1) three-cavity well</i>	
3 Bottle Refill Kit	90001
<i>Includes: (1) 6mL bottle of Surpass® 1, (1) 6mL bottle of Surpass® 2, (1) 6mL bottle of Surpass® 3</i>	
(1) 6mL Surpass 1 Refill Bottle	90002
(1) 6mL Surpass 2 Refill Bottle	90003
(1) 6mL Surpass 3 Refill Bottle	90004
Applicator Refill	90007
<i>Includes: (100) green applicators, (100) purple applicators, (100) blue applicators</i>	
(1) 3mL Three-Cavity Well	90005

Simplicity Self-Etch Adhesive System

Simplicity Self-Etch Adhesive system combines the three most important features of flawless bonding. Simplicity provides consistency, versatility and speed in the same package.

- No sensitivity, excellent bond strengths, and superior long-term performance
- Only requires 2 procedures (1 extra coat of Simplicity 2 for indirect procedures)
- For use on all in all direct and indirect restorative procedures
- Produces etching results identical to a 37% phosphoric acid gel etch



PRODUCT	SKU
Simplicity Refill Set	90402
<i>Includes: (1) 6mL bottle of Simplicity 1, (1) 6mL bottle of Simplicity 2</i>	
(1) 6mL Bottle of Simplicity 1	90404
(1) 6mL Bottle of Simplicity 2	90405
Two-Cavity Well	90418

SCAN THE QR CODE TO GO DIRECTLY TO EACH PRODUCT LISTING OR VISIT VISTAAPEX.COM TO START YOUR ORDER!

ORDER ANYTIME THROUGH YOUR PREFERRED DEALER

Bonding & Etching

FEATURED PRODUCT

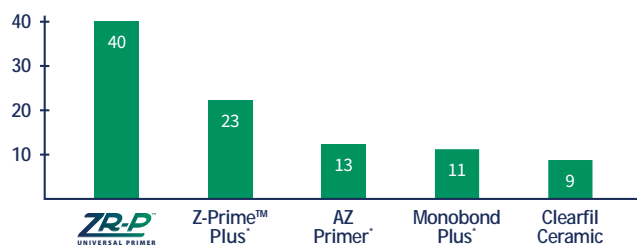


ZR-P™ Universal Primer

ZR-P is a primer that increases the bond strength between zirconia, alumina, metal surfaces and resin materials. By combining two active monomers, ZR-P provides exceptional bond strength to the most challenging substrates.

- Provides high bond strengths to zirconia, alumina and metal restorations
- Bond strengths that allow for the delivery of partial coverage indirects
- Enhances bond strengths of other resins

ZR-P BOND STRENGTH VS. THE COMPETITION**



PRODUCT	SKU
Bottle Kit	90577

Includes: (1) 4mL bottle, (50) applicators, (1) single-cavity well



* Registered trademarks of: Bisco Dental, Shofu Dental Corporation, Ivoclar Vivadent, Inc, Kuraray America Inc.
** Internal data. Available upon request.

Interface Ceramic Primer

Interface is the only material that allows a doctor to prepare ceramics, dentin and enamel in one simple application step. Interface achieves this without the use of hydrofluoric acid.

Interface eliminates the guesswork associated with deciding whether to first etch exposed tooth structure or the ceramic material. Why decide when you can simply use Interface? Interface eliminates the worry over whether your silane is fresh, since it is a two-bottle system that is mixed prior to use. It is at its maximum potency when it is applied.

- Prepares ceramics, enamel and dentin in one application
- Eliminates the hydrofluoric/phosphoric acid dilemma
- Always fresh



PRODUCT	SKU
Interface Kit	90030
Includes: (1) 3mL bottle of Interface A, (1) 3mL bottle of Interface B, (50) applicators, (1) single-cavity well	
(1) 3mL Bottle of Interface A	SDL19
(1) 3mL Bottle of Interface B	SDL20

FREE STANDARD SHIPPING ON ORDERS OVER \$400 | CALL TOLL FREE 877.418.4782 OR VISIT VISTAPEX.COM

Bonding & Etching

FEATURED PRODUCT

ZR-C™ Universal Cleanser

ZR-C is an aqueous-based universal cleanser suitable for non-abrasive cleaning of the intaglio surface of prosthetic restorations after intraoral try-in.

Use ZR-C to clean ceramic and metal substrates prior to bonding or cementing in place.

- Removes significantly more phosphate contamination from zirconia surfaces than Ivoclean™*
- Can be used with ALL dental restorative materials
- Ready to use (no shaking required, unlike Ivoclean™)
- Orange colorant provides an excellent contrast to ensure complete coverage
- Optimized viscosity for easy handling and application
- Syringes with Spira-Flo™ Brush Tips offer superior delivery



PRODUCT	SKU
(1) 5g Bottle Kit	90779-2
4Pk Syringe Kit	90782-2
Includes: (4) 1.2mL prefilled syringes, (25) Spira-Flo™ tips	

*Ivoclean™ is a registered trademark of Ivoclar.



BondSaver

BondSaver has been formulated to be used with self-etch, glass ionomers, and resin modified glass ionomers.

BondSaver desensitizes instantly and prevents bond degradation.



PRODUCT	SKU
(1) 6mL Bottle of BondSaver	90412

CHX Restorative 2% Chlorhexidine Gluconate

Used for the final irrigation step for long lasting cleansing and promotes adhesion of sealers and obturation materials.



PRODUCT	SKU
(1) 16oz (480mL) Bottle	317010-2
30mL Bulk Syringe	503750-2
Includes: (1) 30mL bulk syringe, (1) docking port, (1) docking cap	
Restorative Kit	502450-2
Includes: (4) 1.2mL prefilled syringes, (40) Sol-u-Flo™ tips	



SCAN THE QR CODE TO GO DIRECTLY TO EACH PRODUCT LISTING OR VISIT VISTAAPEX.COM TO START YOUR ORDER!

ORDER ANYTIME THROUGH YOUR PREFERRED DEALER

Bonding & Etching

FEATURED PRODUCT

Clean & Boost®

Dentin and Enamel Cleanser

Clean & Boost® is an aqueous cleanser and etchant that has been designed to remove contaminants from the surface of a tooth prior to bonding.

Clean & Boost® increases bond strength up to 36% when used in conjunction with a single bottle adhesive.

- Nitric Acid: Enables etching ability & cauterizes minor bleeding
- Isopropyl Alcohol: Cleanses prior to bonding
- HEMA: Desensitizer blocks dentin tubules



PRODUCT	SKU
Single (Gel)	90058
Includes: (1) 1.5mL syringe, (5) Stat-Flo™ brush tips	
5Pk (Gel)	90417
Includes: (5) 1.5mL syringe, (20) Stat-Flo™ brush tips	

PRODUCT	SKU
Single (Liquid)	90056
Includes: (1) 1.5mL syringe, (5) Stat-Flo™ brush tips	
5Pk (Liquid)	90057
Includes: (5) 1.5mL syringe, (20) Stat-Flo™ brush tips	



Average of **36%**
increase in Bond Strength*



10 Seconds to Cleanse



20 Seconds to Etch

*Testing results provided by Dr. John Kanca using Scotchbond Universal without Clean & Boost® and Scotchbond Universal with Clean & Boost®



Best-Etch™

Best-Etch is a 37% Phosphoric Acid Etch, designed to etch and prepare dentin and enamel.

- Viscous solution that stays in place
- Rinses clean with water and leaves no residue
- Pre-bent applicator tips ensure precise delivery
- 25ga pre-bent tips are available on request



PRODUCT	SKU
Standard Kit	502115-2
Includes: (4) 1.2mL prefilled syringes, (25) 22ga pre-bent tips	
Bulk Kit	502235-2
Includes: (1) 30mL prefilled syringe, (5) empty 6cc syringes, (1) docking port, (50) 22ga pre-bent tips	
Bulk Refill	502230-2
Includes: (1) 30mL prefilled syringe, (1) docking port	
Value Pack	502200-2
Includes: (12) 3mL prefilled syringes, (75) 22ga pre-bent tips	



Velvet Etch™

Feel Like Royalty

Velvet Etch is a purple 40% Phosphoric Acid Etch with optimized viscosity for precision placement. Velvet Etch is the ideal viscosity, providing accurate placement, control and consistency. It can be applied to vertical tooth surfaces and remain in place and is great for selective etch techniques. Velvet Etch is the new benchmark for phosphoric acid etches.



PRODUCT	SKU
4 Pack	503315-2
Includes: (4) 1.2mL prefilled syringes, (25) 22ga pre-bent tips	
12 Pack	503300-2
Includes: (12) 1.2mL prefilled syringes, (75) 22ga pre-bent tips	

- Smooth consistency
- Precision placement
- Rinses clean
- Vibrant purple color



FREE STANDARD SHIPPING ON ORDERS OVER \$400 | CALL TOLL FREE 877.418.4782 OR VISIT VISTAPEX.COM

Bonding & Etching



Porcelain Etch

Viscous 9.5% Hydrofluoric Acid Solution

For porcelain veneers and inlays prior to cementation or repairs.

- Viscous solution
- Rinses clean away
- Includes adjustable Spira-Flo™ brush tips with curved cannula for optimal entry
- Silane solution used after etchant enhances the bonding of resin material



PRODUCT	SKU
Standard Kit	502500-2
Includes: (2) 1.2mL prefilled etch syringes, (2) 1.2mL prefilled silane syringes, (25) Spira-Flo™ brush tips	
2Pk Etch Refill Kit	502512-2
Includes: (2) 1.2mL prefilled etch syringes, (25) Spira-Flo™ brush tips	
4Pk Etch Refill Kit	502510-2
Includes: (4) 1.2mL prefilled etch syringes, (25) Spira-Flo™ brush tips	
4Pk Silane Refill Kit	502505-2
Includes: (4) 1.2mL prefilled silane syringes	

FEATURED PRODUCT



DesensiMAX

Vista Apex formulated a fast-acting desensitizer, which can be used with total etch and selective etch adhesive systems. Additionally, DesensiMAX treats sensitivity resulting from exposed dentin.

- Virtually eliminates sensitivity INSTANTLY
- Rewets the tooth surface to provide optimal moisture levels for bonding
- Provides fluoride at the restorative-tooth interface to provide a zone of inhibition to prevent secondary decay
- Inhibits MMPs, giving you better bond longevity



PRODUCT	SKU
DesensiMAX	90413
Includes: (1) 10mL bottle, (1) single-cavity well, (25) applicators	

Need Some Additional Tips?

Regardless of your application, having the right tip can ensure efficient use of materials. To view our full selection of tips, please see the Tips & Syringes section on page 53.



Delivery Tips



Brush Tips



Endodontic Tips

SCAN THE QR CODE TO GO DIRECTLY TO EACH PRODUCT LISTING OR VISIT VISTAAPEX.COM TO START YOUR ORDER!

ORDER ANYTIME THROUGH YOUR PREFERRED DEALER



The Power of Attraction, Creating Bio-Regenerative Restorations.

Reduce restorative failure and sensitivity. Construct longer lasting restorations.



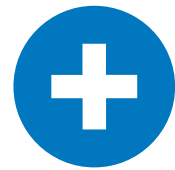
Attract

Bioglass attracts and exchanges bioactive ions (Ca^{2+} , PO_4^{3-} , F^-) with the oral environment.



Protect

Continuous pH buffering helps prevent erosion & secondary decay.



Heal

The bioconstructive nature of RE-GEN™ helps close marginal gaps, preserving marginal integrity.



Universal Adhesive · Flowable Composite Liner · Self Etch Adhesive · Dentin and Enamel Cleanser

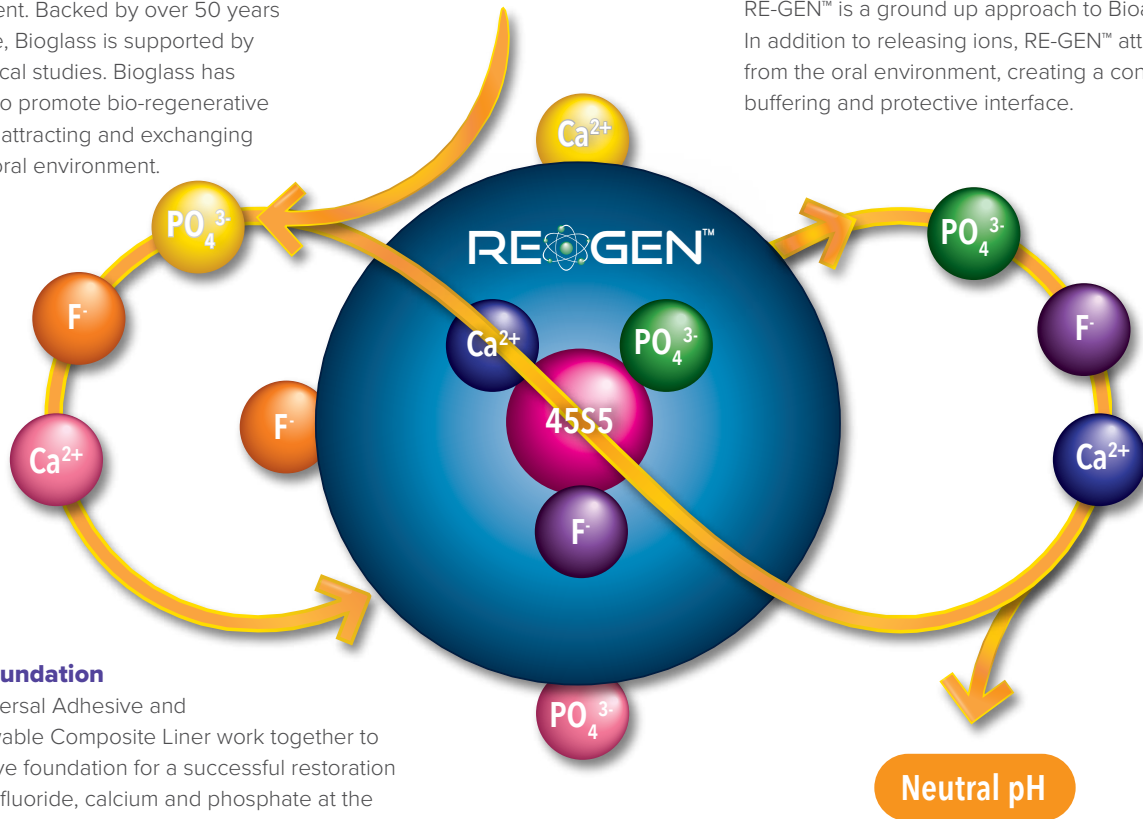
Bio-Regenerative Exchange

45S5

RE-GEN™ is the first line of bioactive products to employ Bioglass 45S5 as an active ingredient. Backed by over 50 years of medical use, Bioglass is supported by countless clinical studies. Bioglass has been proven to promote bio-regenerative healing, while attracting and exchanging ions with the oral environment.

Acidic oral environment

Introducing RE-GEN™ from Vista Apex, developed with Dr. John Kanca III, DMD. RE-GEN™ is a ground up approach to Bioactivity. In addition to releasing ions, RE-GEN™ attracts ions from the oral environment, creating a continuous buffering and protective interface.



A Strong Foundation

RE-GEN™ Universal Adhesive and RE-GEN™ Flowable Composite Liner work together to form a bioactive foundation for a successful restoration by depositing fluoride, calcium and phosphate at the resin dentin interface.

RE-GEN™ Technique

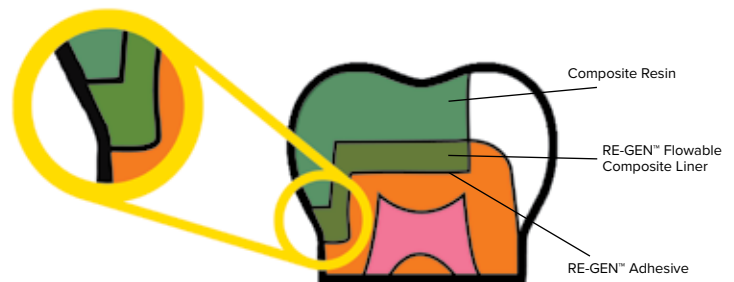
Utilizing an Open Sandwich Technique:

- + For optimal results, use RE-GEN™ Universal Adhesive and RE-GEN™ Flowable Composite Liner utilizing an open sandwich technique.
- + Co-Cure the materials together as a replacement to dentin, also filling the cervical part of the box.
- + This results in exposure of 45S5 (BAG or Bio-Active Glass) to the oral environment, fueling RE-GEN™'s Bio-Regenerative and pH buffering.

Buffer is Better

Chemical demineralization of teeth is caused by acidic attack through two primary means: consumption of acidic food or drink and bacteria present in the mouth. At a low pH, hydroxyapatite is easily solubilized, and the tooth is at risk of erosion and secondary decay. RE-GEN™ has the ability to resist acidic attack by neutralizing these agents.

See it in Action



Open Sandwich Technique

What the ETCH?!

The Vista Apex Suite of Etchants takes the guesswork out of your restorative results.



Velvet Etch™



Best-Etch™



Porcelain Etch



**Clean and Boost®
Gel**



**Clean and Boost®
Liquid**

Indications for Use

To etch and prepare dentin and enamel.

To etch and prepare dentin and enamel.

For the preparation of porcelain crowns, veneers, or inlays prior to cementation. It is also used in preparing fractured porcelain and porcelain-to-metal crown bonding.

An acidic, aqueous cleanser and etchant that has been designed to help remove contaminants from the surface of a tooth prior to bonding.

An acidic, aqueous cleanser and etchant that has been designed to flow into the deepest pits and fissures for superior etching prior to placement of sealants.

When to Use

Ideal for selective etch, but can also be used for total etching

Ideal for total etch, but can also be used for selective etching

Ideal for use with porcelain materials

Ideal for use next to sensitive tissues where phosphoric etch would cause additional gingival aggravation. Kinder to tissues than phosphoric etch.

Prior to placement of RE-GEN Pit & Fissure Sealant (or Sealant of your choice)

Active Ingredient

40% Phosphoric Acid

37% Phosphoric Acid

9.5% Hydrofluoric Acid

Blend of Nitric Acid, Isopropyl Alcohol, and HEMA

Blend of Nitric Acid, Isopropyl Alcohol, and HEMA

Key Benefits

Smooth formulation for precise placement

Ideal viscosity does not slump and remains in place even on vertical surfaces

Unique purple color makes it easy to distinguish when placing and rinsing

Leaves no residue

Thicker gel remains in place, will not run onto exposed tissue

Leaves no residue

Blue color aids in visibility during application and rinsing

Does not slump

High bond strength to porcelain, when used with Silane

Leaves no residue

Ideal for porcelain etching and repairs of fractured porcelain

Nitric acid – enables etching ability and cauterizes minor bleeding

Isopropyl Alcohol – antimicrobial agent cleanses prior to bonding

HEMA – desensitizer blocks dentin tubules

Gentle to surrounding tissues

Nitric acid – enables etching ability and cauterizes minor bleeding

Isopropyl Alcohol – antimicrobial agent cleanses prior to bonding

HEMA – desensitizer blocks dentin tubules

Gentle to surrounding tissues

See pages 12 and 13 for more details



COMPOSITES & CEMENTS

More General Dentists are performing Endo and more Endodontists are restoring endodontically treated teeth. Vista Dental felt that there was a gap in providing clinicians a full solution, and acquired Apex Dental Materials, who specializes in innovative restorative solutions. The composites and cements offered by Vista Apex are designed with the clinician in mind, to create long-lasting restorations.

- RE-GEN™ Flowable Composite Liner
- RE-GEN™ Pit & Fissure Sealant
- Injectafil® Dual Core Composite
- Exquisite Restoration™ Nanofill Composite
- Titan Flowable Composite
- Seamfree Composite
- Wetting Resin & Lubricant
- Compule Dispensing Gun
- Anchor® Core Build-Up Luting Material, Extrusion Gun & Tips

Composites & Cements

FEATURED PRODUCT



RE-GEN™ Flowable Composite Liner

RE-GEN™ Flowable Composite Liner is formulated with a unique combination of thickness and flow in the same material. RE-GEN™ Flowable Composite Liner provides unsurpassed strength and toughness while offering a high level of radiopacity. The use of Bioglass within this material prevents demineralization and provides a zone of inhibition to prevent recurrent carries and secondary decay. These features improve the longevity and overall performance of the restoration.

- Releases and attracts calcium, phosphate, and fluoride to maximize the potential for remineralization of tooth structure
- Exceptional radiopacity < 300%
- Unsurpassed compressive strength of 357 MPa
- High modulus material provides a strong foundation within direct restorations
- Contains no Bisphenol A and no BPA derivatives



PRODUCT	SKU
4 Syringes – A1	90647
Includes: (4) 1.5 gram syringes of A1, (25) 20ga. Pre-Bent tips	
4 Syringes – A2	90648
Includes: (4) 1.5 gram syringes of A2, (25) 20ga. Pre-Bent tips	
4 Syringes – A3	90649
Includes: (4) 1.5 gram syringes of A3, (25) 20ga. Pre-Bent tips	
4 Syringes – A3.5	90650
Includes: (4) 1.5 gram syringes of A3.5, (25) 20ga. Pre-Bent tips	
4 Syringes – A4	90651
Includes: (4) 1.5 gram syringes of A4, (25) 20ga. Pre-Bent tips	
4 Syringes – B1	90652
Includes: (4) 1.5 gram syringes of B2, (25) 20ga. Pre-Bent tips	
4 Syringes – White Opaque	90654
Includes: (4) 1.5 gram syringes of White Opaque, (25) 20ga. Pre-Bent tips	
4 Syringes – Translucent	90653
Includes: (4) 1.5 gram syringes of Translucent, (25) 20ga. Pre-Bent tips	

PRODUCT	SKU
6 Syringe Variety Pack	90655
Includes: (1) 1.5 gram syringe of all shades (A1, A2, A4, B1, Translucent and White Opaque), (25) 20ga. Pre-Bent tips	
6 Syringe A-Shape Variety Pack	90656
Includes: (1) 1.5 gram syringe of A1, (2) 1.5 gram syringes of A2, (1) 1.5 gram syringe of A3, (1) 1.5 gram syringe of A3.5, (1) 1.5 gram syringe of A4, (25) 20ga. Pre-Bent tips	
6 Syringes – A2	90657
Includes: (6) 1.5 gram syringes of A2, (25) 20ga. Pre-Bent tips	

RE-GEN™ Pit & Fissure Sealant

RE-GEN™ Pit & Fissure Sealant is a hydrophilic, wet bond material that bonds remarkably well in a moist environment. Because of its bioactive properties, RE-GEN™ Pit & Fissure Sealant is able to help prevent demineralization and inhibit secondary decay at the margin, ensuring exceptional margin stability.

- Releases biologically charged ions (phosphate, calcium, fluoride), which enhance enamel remineralization, increase enamel hardness and prevent demineralization
- Low solubility of 0.06%
- Film thickness of 20-25 microns
- BPA & Bis-GMA free



PRODUCT	SKU
4 Syringe Pack	90662
Includes: (4) 1.2mL syringes, (18) MST tips (Material Saving Technology)	

FREE STANDARD SHIPPING ON ORDERS OVER \$400 | CALL TOLL FREE 877.418.4782 OR VISIT VISTAPEX.COM

Composites & Cements

Injectafil® Dual Cure Composite

Injectafil® is a dual-cure composite with handling characteristics that make it ideal for Class I, II, III, IV and V restorations. Injectafil® provides the ability to bulk fill all classes of restorations without worrying about shrinkage or voids. With a high level of wear resistance and color stability, Injectafil® is the only filling material you need to ensure exceptional long term success.

- Save time...completely fill your restoration with ONE layer and ONE material
- Easily polished, highly wear resistant, and stain resistant
- Color stable
- Void-free restorations
- Shrinkage-stress free



PRODUCT	SKU
A2 Kit	90034 Kit
Includes: (1) 10 gram dual barreled syringe of A2, (1) extrusion handle, (8) brown mixing tips, (8) clear intra-oral tips	
A2 Refill	90036
Includes: (1) 10 gram dual barreled syringe of A2, (8) brown mixing tips, (8) clear intra-oral tips	
A4 Kit	90035 Kit
Includes: (1) 10 gram dual barreled syringe of A4, (1) extrusion handle, (8) brown mixing tips, (8) clear intra-oral tips	
A4 Refill	90037
Includes: (1) 10 gram dual barreled syringe of A4, (8) brown mixing tips, (8) clear intra-oral tips	
Extrusion Handle	90038
Tips	90524
Includes: (50) brown mixing tips, (50) clear intra-oral tips	



Exquisite Restoration™ Nanofill Composite

Exquisite Restoration™ is a visible light-activated, nanofill composite for anterior and posterior restorations. Beside its low shrink and low abrasion, Exquisite Restoration™ has exceptional handling and provides excellent mechanical properties. Exquisite Restoration™ is highly radiopaque and is very wear resistant.

- Low stress restorations
- Long-term durability and high hardness
- Highly sculptable
- Beautiful, aesthetic restorations
- Excellent polishability



PRODUCT	A1	A2	A3	A4	B1	D2	D3
4 gram Syringe	90496	90497	90498	90499	90500	90501	90502
5 Pack (5) .3 gram Compules	90579	90580	90581	90582	90583	90584	90585
20 Pack (20) .3 gram Compules	90504	90505	90506	90507	90508	90509	90510

Titan Flowable Composite

Titan was formulated to offer a unique combination of thickness and flow in the same material. The strength and toughness of Titan are unsurpassed while it offers a high level of radiopacity for easy identification on a radiograph. Aesthetically, Titan offers levels of shading and visual translucency ideal for perfect restorations.

- Optimal handling
- Unsurpassed strength and toughness
- High level of radiopacity
- Ideal aesthetics



PRODUCT	1 SYRINGE (1) 1.5 gram syringe, (5) 20ga. Pre-Bent tips	4 SYRINGES (4) 1.5 gram syringes, (25) 20ga. Pre-Bent tips
A1	90343	90010
A2	90344	90011
A3	90345	90490
A3.5	90346	90491
A4	90347	90012
B1	90348	90013
Opaque White	90350	90014
Translucent	90349	90015

PRODUCT	SKU
6 Syringe Variety Pack	90008
Includes: (1) 1.5 gram syringe of all shades (A1, A2, A4, B1, Translucent and White Opaque), (25) 20ga. Pre-Bent tips	
6 Syringe A-Share Variety Pack	90489
Includes: (1) 1.5 gram syringe of A1, (2) 1.5 gram syringes of A2, (1) 1.5 gram syringe of A3, (1) 1.5 gram syringe of A3.5, (1) 1.5 gram syringe of A4, (25) 20ga. Pre-Bent tips	
6 Syringes – A2	90009
Includes: (6) 1.5 gram syringes of A2, (25) 20ga. Pre-Bent tips	

SCAN THE QR CODE TO GO DIRECTLY TO EACH PRODUCT LISTING OR VISIT VISTAAPEX.COM TO START YOUR ORDER!

ORDER ANYTIME THROUGH YOUR PREFERRED DEALER

Composites & Cements

FEATURED PRODUCT



Seamfree Composite Wetting Resin & Lubricant

Seamfree is a wetting resin that has been designed to make the handling of composite material easier and more consistent by eliminating the tackiness that makes composite manipulation difficult. Seamfree composite wetting resin cuts down on the time it takes to place direct composites restorations, increasing efficiency and the quality of restorations, saving your practice up to \$33,333 dollars*.

Seamfree is compatible with all methacrylate materials and can be used in all direct or indirect restorations.

- Eliminates tackiness of composite materials
- Does NOT add layers or thickness to composite
- Absorbs into composite after use, does NOT need to be dried or light activated
- Does NOT change physical properties of composite material

PRODUCT	SKU
1 Syringe Kit	90025
<i>Includes: (1) 1.2mL syringe, (10) Exacta-Flo™ Brush Tips</i>	
5 Syringe Kit	90026
<i>Includes: (5) 1.2mL syringes, (50) Exacta-Flo™ Brush Tips</i>	
3mL Bottle Kit	90027
<i>Includes: (1) 3mL bottle, (1) single-cavity well, (25) applicators</i>	



* Based on a time savings of 5 minutes per restoration (contouring and polishing time) when four restorations are done per day, four days a week with an average value of time being \$500/hour=5 minutes/restoration X 4 restorations/day x 4 days/week x 50 weeks worked/ year x 1 hour/60 mins x \$500/hour=\$33,333



CompuLe Dispensing Gun

The CompuLe Dispensing Gun is compatible with all manufacturer's composite compules and is autoclavable.

Works great with Vista Apex's Syringe Warmer, see page 24 for more details.

PRODUCT	SKU
CompuLe Dispensing Gun	4044



FREE STANDARD SHIPPING ON ORDERS OVER \$400 | CALL TOLL FREE 877.418.4782 OR VISIT VISTAAPEX.COM

ORDER ANYTIME THROUGH YOUR PREFERRED DEALER

Composites & Cements

Anchor® Core Build-Up Luting Material

Anchor® is an innovative core build-up material with dual-cure chemistry packaged in an automix cartridge or an automix push syringe. Anchor® has been designed to be thin enough for use as a luting material while having the strength and thixotropic characteristics required for core applications. It is a dual-cure material, so you are assured the material will completely cure in any situation. It can be used as a core build-up material, cement for pins or posts and luting agent for crowns, veneers, etc. The chemistry is compatible with common composites, compomers and their bonding agents.

- Easy to place
- Incredibly easy to clean up
- Bonds to tooth structure
- Easily contoured and prepared immediately
- High strength and modulus
- Cutting resistance similar to tooth structure (carves like dentin)
- Tooth shade under ceramic crowns and veneers
- Compatible with all bonding systems
- Fluoride releasing
- Highly radiopaque
- Dual-cure



PRODUCT	SKU
A2 Cartridge Kit	90047 Kit
Includes: (1) 25mL cartridge of A2, (10) blue mixing tips, (10) yellow intra-oral tips, (1) handle	
A2 Cartridge Refill	90492
Includes: (1) 25mL cartridge of A2, (10) blue mixing tips, (10) yellow intra-oral tips	
A2 5mL Syringe	90494
Includes: (1) 5mL push syringe of A2, (6) brown mixing tips, (6) clear intra-oral tips	

PRODUCT	SKU
White Opaque Cartridge Kit	90048 Kit
Includes: (1) 25mL cartridge of White Opaque, (10) blue mixing tips, (10) yellow intra-oral tips, (1) handle	
White Opaque Cartridge Refill	90493
Includes: (1) 25mL cartridge of White Opaque, (10) blue mixing tips, (10) yellow intra-oral tips	
White Opaque 5mL Syringe	90495
Includes: (1) 5mL push syringe of White Opaque, (6) brown mixing tips, (6) clear intra-oral tips	



Anchor® Accessories



PRODUCT	SKU
(50) Anchor® Blue Tips	90529
Includes: (50) blue mixing tips, (50) yellow intra-oral tips	
(50) Anchor® Brown Tips	90526
Includes: (50) brown mixing tips, (50) clear intra-oral tips	



PRODUCT	SKU
Anchor® Extrusion Gun	90046



SCAN THE QR CODE TO GO DIRECTLY TO EACH PRODUCT LISTING OR VISIT VISTAAPEX.COM TO START YOUR ORDER!

ORDER ANYTIME THROUGH YOUR PREFERRED DEALER

BE SMOOTH BE TACK-FREE



See page 20 for more details

Seamfree
WETTING RESIN & LUBRICANT

- Eliminates tackiness of composite materials
- Does **NOT** add layers or thickness to composite
- Absorbs into composite after use, does **NOT** need to be dried or light activated
- Does **NOT** change physical properties of composite material



ENDODONTICS

As a market leader in endodontic irrigation, Vista Apex provides innovative solutions to thoroughly dissolve tissue and cleanse even the most difficult anatomy. Vista Apex's line of enhanced irrigants and delivery systems, paired with ultrasonic activation, offer a simple, yet extremely effective irrigation protocol.

- Fill Station™
- Luer-Lock Bottle Cap
- Syringe Warmer
- EndoUltra® Cordless Ultrasonic Activator
- SmearOFF™ 2-in-1
- EDTA - 17% Solution
- CanalClean™ Irrigation Kit
- CHX-Plus™
- Sodium Hypochlorite (3 or 6%)
- Chlor-XTRA™
- Vista-Cal™
- Vista-Blue™
- Disposable MTA Carriers

Endodontics

Fill Station™

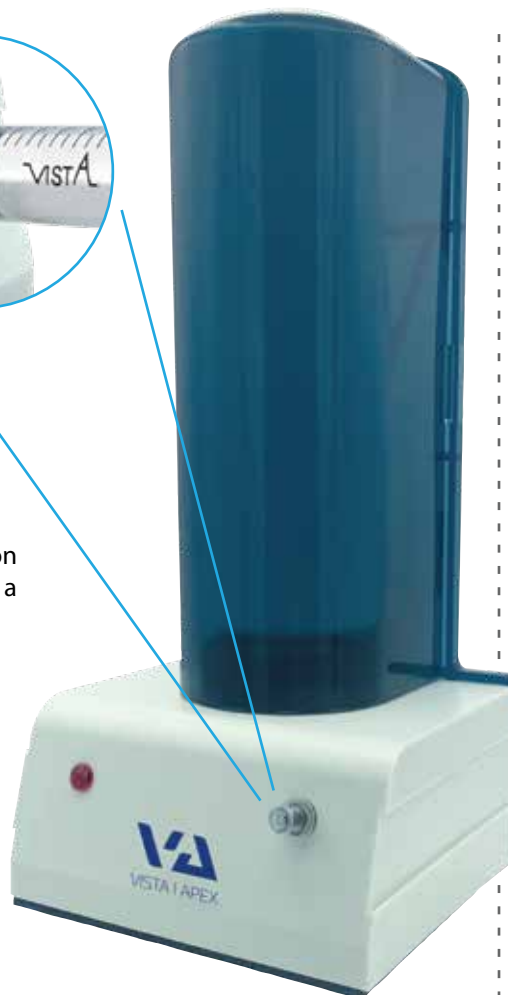
No mess... no waste... less time!

This patented syringe pump fill station offers a simple, convenient way to fill a dental syringe with liquid solutions!

- Able to connect several Fill Station units together for convenient filling of multiple solutions
- Syringe-activated valve and low level light indicator
- Easy to wall mount or use as tabletop modular unit



PRODUCT	SKU
Fill Station™	408400-2
(5) Plastic Stoppers	3604
Replacement Cap	408425-2



Luer-Lock Bottle Cap

A great way to minimize waste and mess!

You'll no longer need to pour solutions into a tray or dish. Simply attach any standard Luer-Lock syringe to the cap and draw the volume you need directly from the bottle!

- Ideal for Vista Apex 16oz (480mL) bottles of endodontic solutions, such as Chlor-XTRA™, Sodium Hypochlorite, EDTA, CHX Plus™, SmearOFF™ and more!
- Can be used on any bottle with 28-400 thread size (straw can be trimmed to fit shorter bottles)
- Compatible with all Luer-Lock syringes
- (1) cap per pack



PRODUCT	SKU
Luer-Lock Bottle Cap	317004-2



Syringe Warmer

Our Syringe Warmer is perfect for heating solutions for WARM delivery of irrigants to the endodontic site.

- Heats up to 130° F – ideal for irrigating solutions and anesthetics
- Cool touch technology housing is comfortable to touch and will not heat other metal surfaces
- Two additional tip recapping slots
- Finger grip side slots
- Runs on standard line voltage



PRODUCT	SKU
110V 6cc Syringe Warmer	404301-2
Includes: (1) 6cc syringe warmer, (5) disposable warmer bowl inserts	
110V 12cc Syringe Warmer	404302-2
Includes: (1) 12cc syringe warmer, (5) disposable warmer bowl inserts	
(30) Warmer Bowl Inserts	404317-2

FREE STANDARD SHIPPING ON ORDERS OVER \$400 | CALL TOLL FREE 877.418.4782 OR VISIT VISTAPEX.COM

FEATURED PRODUCT



EndoUltra® Cordless Ultrasonic Activator

Studies continue to show that using Ultrasonic devices during irrigation enhances antibacterial and tissue dissolving ability of irrigants. Our patented technology produces ultrasonic tip frequency of up to 40,000 Hz – 200 times more powerful than sonic devices! EndoUltra® is the only cordless activator unit capable of generating the tip frequency (40,000 Hz) required to create sufficient acoustical streaming and the cavitation necessary to effectively clean, penetrate and remove vapor lock.

- Promotes penetration of irrigants into dental tubules and canal complexities
- Disrupts biofilm and removes vapor lock
- Easily incorporated into an existing endo irrigation protocol



PRODUCT	SKU
Complete Kit	407702-2
<i>Includes: (1) cordless handpiece, (3) titanium activator tips – 20/02, (3) autoclavable handpiece sleeves, (100) disposable barrier sleeves, (1) tip wrench, (1) charger</i>	
(3) EndoUltra™ Activator Tips	407706-2
(2) Replacement Nosecones	407709-2
(100) Disposable Barrier Sleeves	407719-2
Tip Wrench	407711-2
USB Wall Adapter	4009
USB to Micro USB Cable	4017

Looking For Piezo Tips?

See our full selection in the Piezo Ultrasonics section, page 45.



General
Scalers



Periodontal
Scalers



Endodontic
Tips



Apical
Surgery Tips

SCAN THE QR CODE TO GO DIRECTLY TO EACH PRODUCT LISTING OR VISIT OUR WEBSITE TO START YOUR ORDER!

CALL TOLL FREE 877.418.4782 OR VISIT VISTAPEX.COM

Endodontics

FEATURED PRODUCT



SmearOFF™ 2-in-1

SmearOFF™ removes inorganic debris and facilitates flushing of canal debris!

Our patented 2-in-1 mix effectively replaces two commonly used solutions: EDTA and CHX.

- Superior chelation
- Optimizes smear layer removal
- Clears 27% MORE dentin tubules (compared to leading 17% EDTA product)
- Will NOT form a precipitate when mixed with NaOCl
- No additional rinse needed when used with NaOCl
- Better calcium suspension
- Low surface tension
- Contains CHX

PRODUCT	SKU
16oz (480mL) Bottle	317111-2
Includes: (1) 16oz (480mL) Bottle, (1) Luer-Lock Bottle Cap	
4oz (120mL) Bottle	317112-2



EDTA 17% Solution

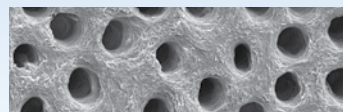
Specifically engineered with LOWER pH for optimal performance! For best outcomes, a LOWER pH is more important than concentration*.

- Prepares dentin walls for better adhesion of filling materials
- Opens dentin tubules
- Removes smear layer and dentin mud
- Enhances cleansing



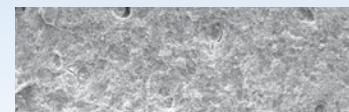
PRODUCT	SKU
16oz (480mL) Bottle	317011-2
Includes: (1) 16oz (480mL) Bottle, (1) Luer-Lock Bottle Cap	
30mL Bulk Syringe	503700-2
Includes: (1) 30mL prefilled bulk syringe, (1) docking port	
4oz (120mL) Bottle	317001-2
Unit Dose	317002-2
Includes: (20) 0.6mL individually packaged prefilled syringes, (20) 27ga Appli-Vac™ side-vent irrigating tips	

Smear Layer Removal SEM



Profound
(EDTA 2 min coronal)

Vista Apex
17% EDTA
8.5 pH



Minimal
(Ultradent)

Ultradent**
18% EDTA
11.56 pH

*Study Data: Nikiforuk G, Greenby L. Demineralization of hard tissues by organic chelating agents. Science 1951; 114:560 Cury JA, Bragotto C, Valdrighi L. The demineralizing efficiency of EDTA solutions on dentin. I. Influence of pH. Oral Surg Oral Med Oral Pathol. 1981 Oct; 52(4): 446-8 O'Connell MS, Morgan LA, Beeler WJ, Baumgartner JC. A comparative study of smear layer removal using different salts of EDTA. J Endod. 2000 Dec; 26(12): 739-43 Serper A, Calt S. The demineralizing effects of EDTA at different concentrations and pH. J Endod. 2002 Jul; 28(7):501-2 Obst JJ. Chelation and dentistry: conceptual orientation. NY J Dent 1962; 30:331-5

** Ultradent® is a registered trademark of ULTRADENT Products, Inc.

FREE STANDARD SHIPPING ON ORDERS OVER \$400 | CALL TOLL FREE 877.418.4782 OR VISIT VISTAPEX.COM

FEATURED PRODUCT

CanalClean™ Irrigation Kit

Complete Endodontic Irrigation Procedure Pack

Save time, save money! Through research and testing, Vista Apex has developed it's CanalClean™ Irrigation Kits to provide EXACTLY what you need for improved outcomes in cleansing root canals.

- Offers everything needed for optimal canal cleanliness, in a convenient 2 solution kit
- Saves you time, eliminating the need for EDTA, CHX and a rinsing agent
- Chlor-XTRA™ and SmearOFF™ are 100% compatible and WILL NOT form a precipitate when mixed, making irrigation simple and predictable



PRODUCT	SKU
CanalClean™ Irrigation Kit	504700-2
Includes: (1) 12cc syringe of Chlor-XTRA™ (6% NaOCl), (1) 6cc syringe of SmearOFF™ 2-in-1, (2) 30ga Appli-Vac™ side-vented irrigating tips, (1) Micro Aspirator with tip	

CHX-Plus™

2% Chlorhexidine Gluconate Solution

Includes powerful wetting agents and proprietary surface modifiers to improve depth of penetration. Used for the final irrigation step for long lasting cleansing and promotes adhesion of sealers and obturation materials.



PRODUCT	SKU
16oz (480mL) Bottle	503900-2
Includes: (1) 16oz (480mL) Bottle, (1) Luer-Lock Bottle Cap	
Endo Kit	502925-2
Includes: (4) 1.2mL prefilled syringes, (20) 27ga Appli-Vac™ side-vent irrigating tips	
Endo Refill Kit	503930-2
Includes: (20) 1.2mL prefilled syringes	
30mL Bulk Syringe	503650-2
Includes: (1) 30mL prefilled bulk syringe, (1) docking port	
30mL Bulk Syringe Kit	503400-2
Includes: (1) 30mL prefilled bulk syringe, (1) docking port, (20) 1.2cc syringes, (20) 27ga Appli-Vac™ side-vent irrigating tips	

Sodium Hypochlorite

3% or 6% Solutions

Store-bought bleach has not been manufactured with medical device standards, is less stable and has a shorter or even unclear shelf-life. Vista Apex Sodium Hypochlorite is effective at tissue dissolution and has a low viscosity, making it easy to introduce into the canal architecture.



PRODUCT	SKU	PRODUCT	SKU
16oz (480mL) Bottle (3%)	317018-2	16oz (480mL) Bottle (6%)	317008-2
3mL Syringe (3%)	502355-2	3mL Syringe (6%)	502350-2
Includes: (10) 3mL prefilled syringes, (10) 27ga Appli-Vac™ side-vent irrigating tips		Includes: (10) 3mL prefilled syringes, (10) 27ga Appli-Vac™ side-vent irrigating tips	
12mL Syringe (3%)	502315-2	12mL Syringe (6%)	502300-2
Includes: (10) 12mL prefilled syringes, (10) 27ga Appli-Vac™ side-vent irrigating tips		Includes: (10) 12mL prefilled syringes, (10) 27ga Appli-Vac™ side-vent irrigating tips	

SCAN THE QR CODE TO GO DIRECTLY TO EACH PRODUCT LISTING OR VISIT VISTAAPEX.COM TO START YOUR ORDER!

ORDER ANYTIME THROUGH YOUR PREFERRED DEALER

Endodontics

FEATURED PRODUCT

Chlor-XTRA™

Enhanced 6% NaOCl

This 6% Sodium Hypochlorite formula, enhanced with powerful wetting agents and propriety surface modifiers, penetrates into lateral canals and isthmuses by lowering the surface tension. This more powerful oxidizing agent is over 2 times thinner than standard Sodium Hypochlorite and 2 times more digestive.

- Reduce post-treatment complications
- Improve contact and dissolve more tissue
- Increase lubricity
- Decrease surface tension

PRODUCT	SKU
16oz (480mL) Bottle	503800-2
Includes: (1) 16oz (480mL) Bottle, (1) Luer-Lock Bottle Cap	
3mL Prefilled Syringes	503825-2
Includes: (10) 3mL prefilled syringes, (10) Appli-Vac™ 27ga side-vent irrigating tips	
12mL Prefilled Syringes	503850-2
Includes: (10) 12mL prefilled syringes, (10) Appli-Vac™ 27ga side-vent irrigating tips	



Vista-Cal™

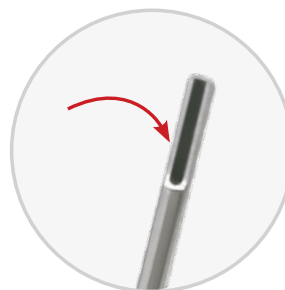
Vista-Cal™ is a 12.5 pH aqueous solution for temporary filling and cleansing root canals.

- Contains no more than 35% Calcium Hydroxide paste
- Includes MST Visco-Tip™ and high pressure syringes for the most effective delivery of Calcium Hydroxide

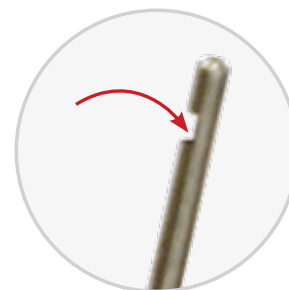
PRODUCT	SKU
Standard Kit	502600-2
Includes: (4) 1.2mL prefilled high pressure syringes, (10) MST Visco-Tips™	
Value Pack	502601-2
Includes: (20) 1.2mL prefilled high pressure syringes	



Irrigants are delivered safely with...



Appli-Vac™
Irrigating Tips



Vista-Probe™
Irrigating Tips

Whether you need side venting of irrigants for extra control, or side-port delivery for sensitive areas, we have the Irrigating Tips you need in a variety of gauges and quantities!

See Page 53 for more information.

FREE STANDARD SHIPPING ON ORDERS OVER \$400 | CALL TOLL FREE 877.418.4782 OR VISIT VISTAPEX.COM

Endodontics

Vista-Blue™

Vista-Blue™ has been formulated to detect fractures and hard-to-find root canal orifices. Methylene blue dye has superior pooling and visibility, making it preferable to caries indicator dyes for identifying extra and intra-coronal cracks.

Methylene blue dye should be applied with a disposable applicator tip. The dye will stain clothing and countertops, so extreme care must be taken to prevent it from coming into contact with these items. Unique unit dose packaging of Vista-Blue™ is a great way of limiting the risk of staining. The individual brush tip can be used for a single patient and disposed of without fear of sterilization issues.

PRODUCT	SKU
Standard Kit	503429-2
<i>Includes:</i> (24) Micro-applicator brushes, (6) Two-cavity mixing wells, (1) 10mL bottle of Methylene Blue	
Unit Dose	317007-2
<i>Includes:</i> (30) Unit dose applications with individual application brushes	



Get precise control of your irrigations!



Stropko™ Irrigator

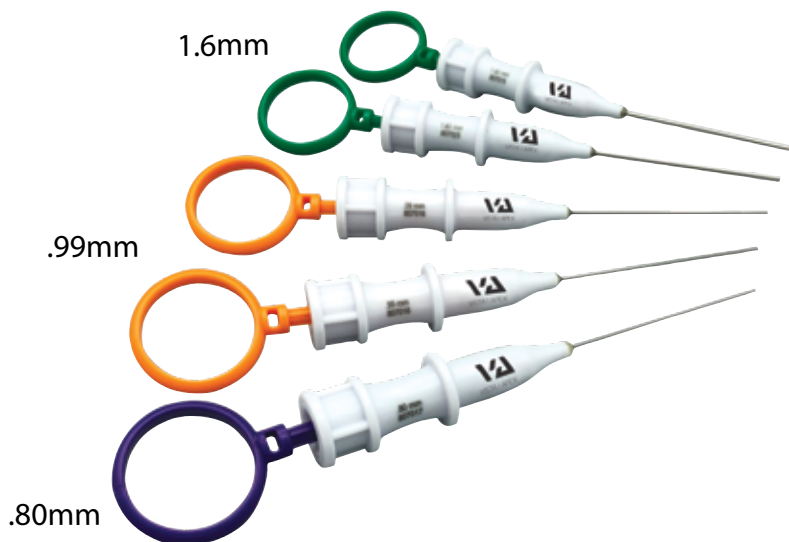
The Stropko™ Irrigator is an instrument used for precise control of air and/or water in any dental procedure that requires irrigation or drying during the process. It has many multi-disciplinary uses, including Endodontics, Restorative, Periodontics, Implants, Surgery and Orthodontics.

Adapts to most air/water dental syringes.

Clean and dry with confidence!

See Page 60 for more information.

Available in 3 sizes



Disposable MTA Carriers

For a broad range of applications from internal perforation repairs to root end fillings.

- For one-time use (autoclave before first use)
- Delivers MTA directly to the apex of the root canal
- Eliminates the time-consuming clean up and cost associated with other metal carriers
- Bendable cannula



PRODUCT	SKU
(5) 0.80mm MTA Carriers (Purple)	807017-2
(5) 0.99mm MTA Carriers (Orange)	807016-2
(5) 1.60mm MTA Carriers (Green)	807015-2
Variety 5-Pack	807019-2
<i>Includes:</i> (2) 1.6mm MTA Carriers (Green), (2) 0.99mm MTA Carriers (Orange), (1) 0.80mm MTA Carrier (Purple)	

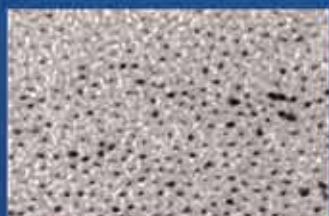
SCAN THE QR CODE TO GO DIRECTLY TO EACH PRODUCT LISTING OR VISIT VISTAAPEX.COM TO START YOUR ORDER!

ORDER ANYTIME THROUGH YOUR PREFERRED DEALER

Clean Up Your Root Canal Workflow

Eliminate steps while
preserving the best
care for your patients.

- Optimal smear layer removal
- Superior chelation and enhanced cleansing
- No additional rinse needed when used with NaOCl



NaOCl + SmearOFF
No precipitate
Open dentinal tubules



NaOCl + CHX
Precipitate occluding
the dentinal tubules



See page 26 for more details





EVACUATION

Vista Apex's evacuation line offers a large assortment of instruments for high volume, surgical and endodontic evacuation. Vista Apex's high quality aspirators are made of stainless steel and are built to last. This collection of products is priced to save you money compared to other leading brands!

- Surgical Aspirators
- Surgical Evacuation Tubes
- Surgical No-Clog Aspirator
- Frazier Aspirators
- High-Volume Aspirators
- Straw Aspirator Kit
- Endodontic Aspirators
- Micro Aspirators
- Low-Speed Saliva Ejectors & Valve
- Saliva Ejector Filters
- Aspirator/Valve Cleaning Brushes
- High-Speed Suction Valve
- Disposable HVE Screens

Evacuation

Surgical Aspirators

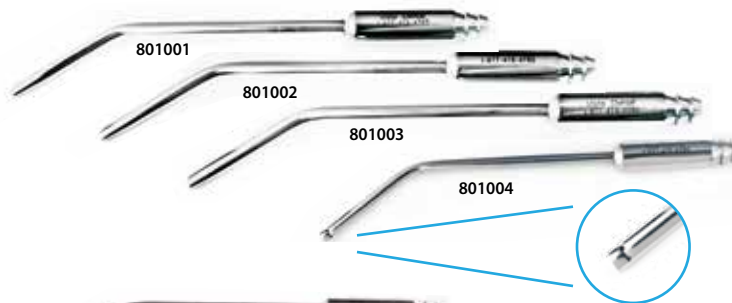
Vista Apex Aspirators are constructed with Stainless Steel and highly polished for corrosion resistance. Fits HVE Cut-off valve.

1.5mm 2.5mm 3.0mm 4.0mm



Length: 6"

- Tapered tip helps reduce clogging in the tube
- Tissue relief slots prevent grabbing of soft tissue (SKU#801004)



OPENING	LENGTH	SKU
1.5mm	6"	801001-2
2.5mm	6"	801002-2
3.0mm	6"	801003-2
4.0mm	6"	801004-2

Length: 6"

- Made of 1/4" stainless steel
- Large size tube for higher volume suctioning
- Tapered tip helps prevent clogging



OPENING	LENGTH	SKU
1.5mm	6"	801009-2
2.5mm	6"	801010-2
3.0mm	6"	801011-2

Length: 9.25"

- Fits 1/4" surgical tubing
- Surgical suction tip with built-in Frazier style vacuum control

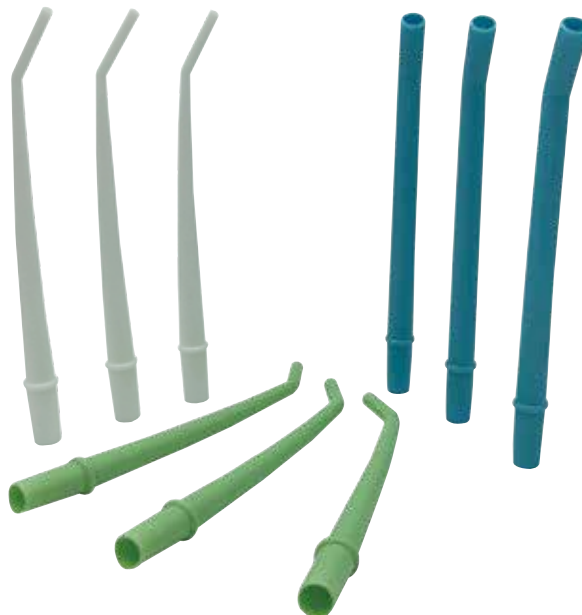


OPENING	LENGTH	SKU
1.5mm	9.25"	801015-2
2.5mm	9.25"	801016-2
3.0mm	9.25"	801017-2

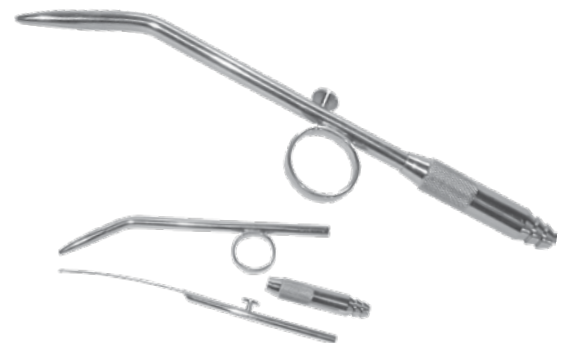
Surgical Evacuation Tubes

Offered in three sizes:
1/8" Diameter,
1/4" Diameter,
or 3/8" Diameter
(non-vented).

- For micro-aspiration use White (1/8")
- For macro suction use Green (1/4") or Blue (3/8")
- Pre-bent to a 30° angle for greater access
- Autoclavable



PRODUCT	LENGTH	SKU
1/8" Diameter, Vented, 25/Bag	6"	403201-2
1/4" Diameter, Vented, 25/Bag	6"	403202-2
3/8" Diameter, Non-Vented, 25/Bag	6"	403211-2



Surgical No-Clog Aspirator

This aspirator has a 3-piece function that allows for maximum asepsis control of internal components with a built-in stylist.

- Fits HVE cut-off valve and uses medium size cleaning brush
- Tapered tip to help prevent clogging
- Pre-bent to a 30° angle for greater access

OPENING	LENGTH	SKU
3.0mm	7.75"	801020-2



FREE STANDARD SHIPPING ON ORDERS OVER \$400 | CALL TOLL FREE 877.418.4782 OR VISIT VISTAPEX.COM

Evacuation

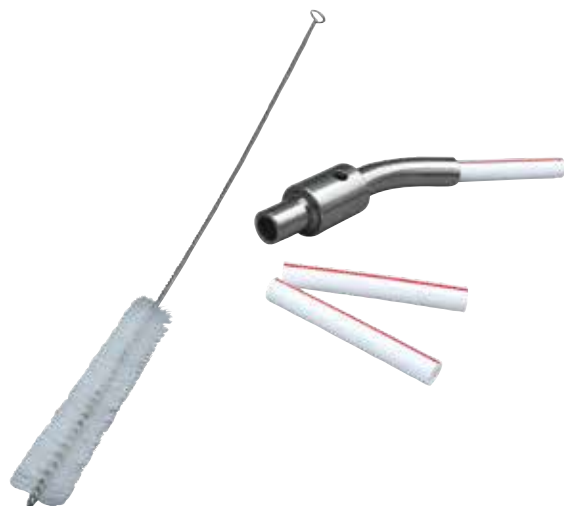
Frazier Aspirators

Surgical Suction Aspirator

Frazier style aspirators fit surgical tubing or Flip A and Flip D high-speed suction valves.

- Tapered tip helps prevent clogging
- Uses medium size cleaning brush
- Finger suction adjustment hole regulates aspiration during procedures

OPENING	LENGTH	SKU
1.5mm	7.75"	805001-2
2.5mm	7.75"	805002-2
3.0mm	7.75"	805003-2
4.0mm	7.75"	805004-2



Straw Aspirator Kit

High-Speed Suction Aspirator

- Fits all varieties of straw aspirators
- Side-venting suction adjustment holes regulate aspiration during procedures
- 1.5mm opening
- Length: 4.5"



PRODUCT	SKU
Straw Aspirator Kit	802017-2
Includes: (1) Straw aspirator, (200) replacement straws	
(200) Replacement Straws	802020-2

High-Volume Aspirators

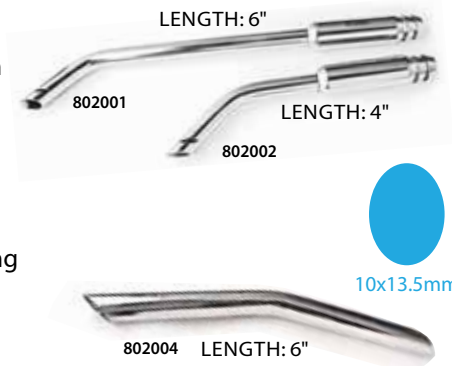
Vista Apex offers multiple variations of quality, stainless steel construction, autoclavable high-volume aspirators.



Standard High-Volume Aspirators

PRODUCT	LENGTH	SKU
5.5x6.5mm	6"	802001-2
5.5x6.5mm	4"	802002-2
10x13.5mm	6"	802004-2

Standard High-Volume Aspirators were designed with tissue relief slots to prevent grabbing of tongue, cheek or soft tissue. The bend allows for greater comfort during aspiration and are available in 4" or 6" length, with an opening of 5.5x6.5mm or 10x13.5mm (only available in 6" length).



Back-Cut High-Volume Aspirators

PRODUCT	LENGTH	SKU
9.5x6.5mm	6"	802011-2

The Back-Cut High-Volume Aspirator also has tissue relief slots and a flattened surface to help with retraction. The back-cut aspirators are 9.5 x 6.5mm opening and 6" in length.



Short-Cut High-Volume Aspirators

PRODUCT	LENGTH	SKU
6x4mm	4"	802013-2
9.5x6.5mm	4"	802015-2
11.5x7.5mm	4"	802016-2

The Short-Cut High-Volume Aspirators have an overall length of 1-1/4" and are available in the opening sizes: 6x4mm, 9.5x6.5mm, 11.5x7.5mm. These aspirators also have tissue relief slots and a flattened surface.



SCAN THE QR CODE TO GO DIRECTLY TO EACH PRODUCT LISTING OR VISIT VISTAAPEX.COM TO START YOUR ORDER!

ORDER ANYTIME THROUGH YOUR PREFERRED DEALER

Evacuation

Endodontic Aspirators

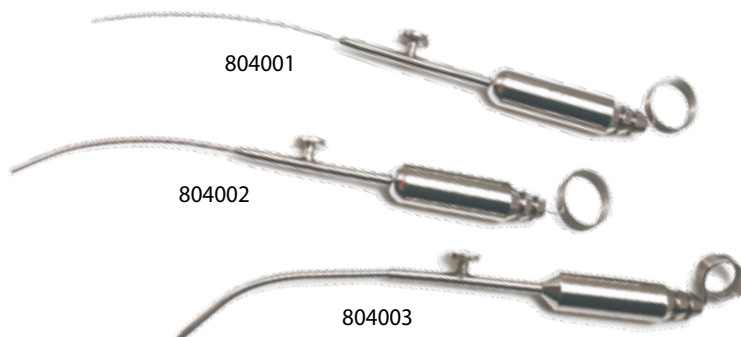
Micro suctioning aspirators that are ideal for root canal aspiration. Stainless steel construction.

0.5mm 1.0mm 1.7mm 2.0mm 2.3mm



Length: 6"

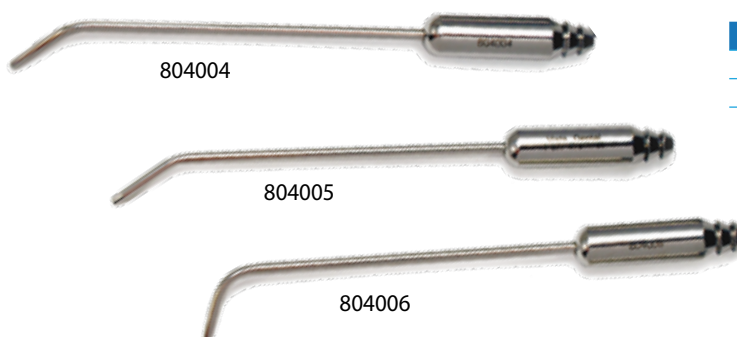
- Finger rest button for exact control of aspirator
- Includes 1 cleaning stylet and fits HVE cutoff valve



OPENING	LENGTH	SKU
0.5mm	6"	804001-2
1.0mm	6"	804002-2
2.0mm	6"	804003-2

Length: 6"

- 1/8" diameter stainless steel
- Fits HVE cutoff valve



OPENING	LENGTH	SKU
2.3mm	6"	804004-2
1.7mm	6"	804005-2
1.7mm	6"	804006-2

Length: 2.75" or 2.5"

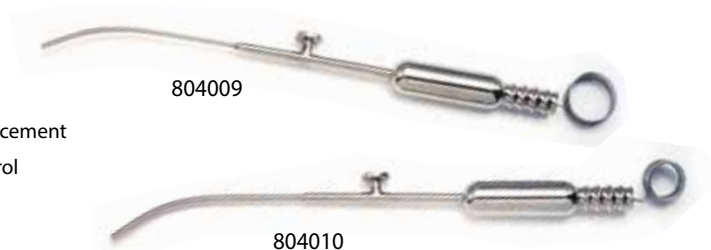
- Tapered tip prevents clogging
- Fits HVE cutoff valve



OPENING	LENGTH	SKU
1.7mm	2.75"	804007-2
1.7mm	2.5"	804008-2

Length: 6.25"

- Bendable tubing for accurate placement
- Finger rest button for exact control of aspirator
- Includes 1 cleaning stylet and fits HVE cut-off valve



OPENING	LENGTH	SKU
1.0mm	6.25"	804009-2
2.0mm	6.25"	804010-2

FREE STANDARD SHIPPING ON ORDERS OVER \$400 | CALL TOLL FREE 877.418.4782 OR VISIT VISTAPEX.COM

Evacuation



Autoclavable Style



Micro Aspirators

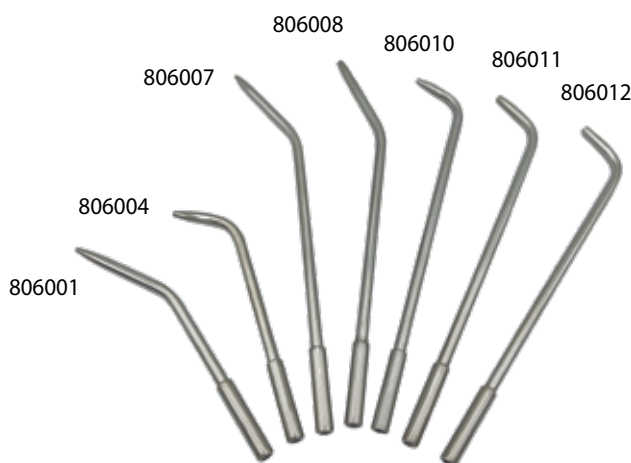
Designed to provide fast and efficient micro-aspiration.

- Virtually eliminates the need for paper points
- Pre-tipped style comes with 3/4" bendable tips (18, 20 or 25ga)
- Autoclavable style can be used with both universal high- or low-speed valve fitments



PRODUCT	SKU
18ga	315258-2
For high-speed suction valve use only Includes: 20/bag, 3/4" bendable tips (resists crimping)	
20ga	315252-2
For high-speed suction valve use only Includes: 20/bag, 3/4" bendable tips (resists crimping)	
25ga	315255-2
For high-speed suction valve use only Includes: 20/bag, 3/4" bendable tips (resists crimping)	

PRODUCT	SKU
Luer HVE Untipped Adapters	315250-2
Single use adapters Includes: 20/bag	
Autoclavable Luer HVE Adapters	315240-2
For high-speed or low-speed valves Includes: 8/box	
Micro Aspirator Evac Set	315230-2
For single use high-speed suction valve use only Includes: (1) untipped luer HVE adapter and 40" extension, 24/box	



Low-Speed Saliva Ejectors

- Autoclavable
- Use with low speed surgical suction valves (saliva ejectors)
- Clean with a medium brush



ANGLE	OPENING	LENGTH	SKU
30°	1.5mm	4"	806001-2
90°	1.5mm	4"	806004-2
30°	1.5mm	6"	806007-2
30°	2.5mm	6"	806008-2
90°	1.5mm	6"	806010-2
90°	2.5mm	6"	806011-2
90°	3.0mm	6"	806012-2

Low-Speed Saliva Ejector Valve & Replacement Heads

- Autoclavable
- Fits standard 3/16" vacuum tubing
- On/off flip action with durable metal flip valve
- Quick disconnect from tubing
- Simple to remove and clean flip valve



PRODUCT	SKU
Low-Speed Saliva Ejector Valve	803003-2
Includes: (1) Valve, (3) Autoclavable heads, (1) Saliva filter	
Saliva Ejector Replacement Heads	803004-2
Includes: 3 replacement heads per bag	

Saliva Ejector Replacement Filters

- Fits Vista Apex's Low-Speed Saliva Ejector Valve, as well as most other saliva ejectors



PRODUCT	SKU
Saliva Ejector Replacement Filters	803015-2
Includes: 100/bag	



SCAN THE QR CODE TO GO DIRECTLY TO EACH PRODUCT LISTING OR VISIT VISTAAPEX.COM TO START YOUR ORDER!

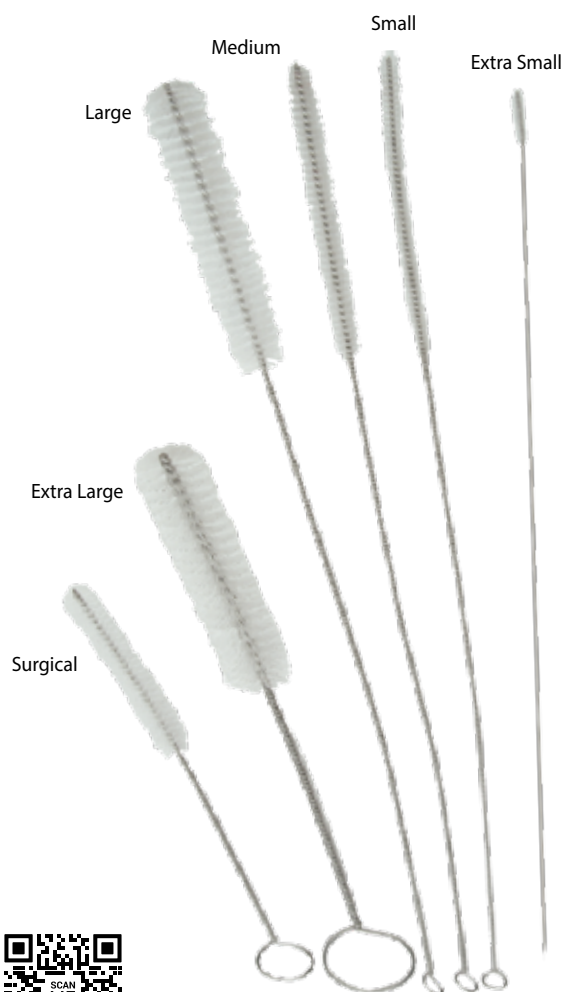
ORDER ANYTIME THROUGH YOUR PREFERRED DEALER

Evacuation

Aspirator / Valve Cleaning Brushes

Choice of sizes for a variety of aspirator and valve diameters.

- Autoclavable
- Sturdy and flexible



PRODUCT	SIZE	SKU
Extra Small Brushes	3/32"	900001-2
Small Brushes	1/8"	900002-2
Medium Brushes	1/4"	900003-2
Large Brushes	1/2"	900004-2
Extra Large Brushes	3/4"	900005-2
Surgical Brushes	3/8"	900006-2
Mixed Pack	2 of each above	900010-2

Includes: (2) Extra Small (3/32"), (2) Small (1/8"), (2) Medium (1/4"), (2) Large (1/2"), (2) Extra Large (3/4") and (2) Surgical (3/8") Brushes



Flip A



Flip D

High-Speed Suction Valve

Autoclavable, quick-disconnect, and flip-style valve.

- On/Off flip action with highly durable metal flip valve
- Simple to remove and clean flip valve
- Equivalent to Flip A or Flip D



PRODUCT	SKU
High-Speed Suction Valve Flip A	803001-2
High-Speed Suction Valve Flip D	803002-2



Disposable HVE Screens

Use with high-volume aspirators to soften tip and prevent grabbing.

- Disposable and cost-efficient
- Adapts to plastic or metal high-volume aspirators
- Helps to prevent grasping of soft tissue



PRODUCT	SKU
Disposable HVE Screens	803011-2

Includes: 100/bag

FREE STANDARD SHIPPING ON ORDERS OVER \$400 | CALL TOLL FREE 877.418.4782 OR VISIT VISTAPEX.COM



EQUIPMENT

Vista Apex provides innovation in the small equipment space. We hold multiple patents and make it our mission to simplify Clinician's lives, while developing the tools necessary for better patient outcomes.

- Phasor™ Composite Warming Gun
- Therma-Flo™ Composite Warming Kit
- PinkWave™ QuadWave™ Curing Light
- VALIANT® Multispectral Curing Light
- EndoUltra® Cordless Ultrasonic Activator

Equipment

Phasor™ Composite Warming Gun

This unprecedented device uses near-infrared technology to rapidly warm even highly filled composites.

- Able to heat composite material to 150°F in seconds
- Warming composite significantly lowers the viscosity of the material, resulting in better adaptation, reduced voids and microleakage, and improved depth of cure
- Materials remain highly sculptable, non-sticky, and easily shaped during manipulation
- Compatible with any brand of composite, Phasor can enhance composite placement for any protocol (Incremental Layering, Two-Layer Bulk Fill or Single-Layer Bulk Fill)!



PRODUCT	SKU
Phasor Composite Warmer Kit	408800-2
Includes: (1) Phasor™ handpiece, (1) charging stand, (3) removable nosecones, (100) disposable barrier sleeves, (1) maintenance kit, (1) medical USB charger, (1) USB to Micro B cable	
Maintenance Kit	408801-2
Includes: (1) Surgical 3/8" brush, (1) 2mm Hex Key	
Replacement Nosecones (2 Pack)	408022-2
Disposable Barrier Sleeves (1 Box of 100)	408501-2

Therma-Flo™ Composite Warming Kit

Vista Apex revolutionized composite delivery with the Therma-Flo™ line of products, uniquely engineered to utilize heat for optimal performance of any preferred composite material. Vista Apex's Composite Warming Kit allows you to use highly filled composites in a wider variety of applications and also provides the versatility to enhance virtually all restorations.

Increase the flowability of highly filled composites without compromising tensile strength, wear-resistance or aesthetics.



PRODUCT	SKU
Complete Kit (110V)	404350-2
Includes: (1) Therma-Flo™ Composite Warming Unit (110V), (2) Composite Syringes, (40) 4X Step Down Tips	
Basic Kit (110V)	404310-2
Includes: (1) Therma-Flo™ Composite Warming Unit (110V) (40) 4X Step Down Tips	
	320817-2



FREE STANDARD SHIPPING ON ORDERS OVER \$400 | CALL TOLL FREE 877.418.4782 OR VISIT VISTAPEX.COM

FEATURED PRODUCT

PinkWave™ QuadWave™ Curing Light

PinkWave™ is the next generation of curing lights, equipped with patented QuadWave™ Technology, offering decreased composite shrinkage and increased depth of cure. With the largest curing light area on the market, PinkWave™ ensures maximum coverage.

QuadWave™ Technology leverages four wavelengths into one collimated pink beam: UV, Blue, Red, and Near-infrared.

See additional PinkWave™ QuadWave™ Curing Light product literature on page 3.

- 12.1mm Curing Area
- Decreased Shrinkage
- Up to 8.5mm depth of cure



PRODUCT	SKU
Complete Kit	90734-2
<i>Includes: (1) Pinkwave™ Curing Light, (1) charging base, (5) autoclavable light shields, (100) disposable barrier sleeves, (3) complementary pairs of safety glasses</i>	
(5) Autoclavable Light Shields	90741-2
(100) Disposable Barrier Sleeves	90752-2

VALIANT® Multispectral Curing Light

- Multispectral, uniform beam through 395-500 nm wavelength range
- Versatility to polymerize nearly all light-cured dental materials
- 4 LED's operate through three curing modes plus transilluminator 'white light'
- Intuitive, easy operation with one-button soft touch on/off switch
- Lightweight and ergonomic style

PRODUCT	SKU
Complete Kit	600100-2
<i>Includes: (1) VALIANT® cordless handpiece, (1) battery pack, (1) charging base, (100) disposable barrier sleeves, (1) curing light shield</i>	
(1) Replacement Light Shield	601001-2
(1) Replacement Battery Pack	601004-2
(100) Disposable Barrier Sleeves	102002-2



SCAN THE QR CODE TO GO DIRECTLY TO EACH PRODUCT LISTING OR VISIT VISTAAPEX.COM TO START YOUR ORDER!

ORDER ANYTIME THROUGH YOUR PREFERRED DEALER

Equipment

FEATURED PRODUCT



EndoUltra® Cordless Ultrasonic Activator

Studies continue to show that using Ultrasonic devices during irrigation enhances antibacterial and tissue dissolving ability of irrigants. Our patented technology produces ultrasonic tip frequency of up to 40,000 Hz – 200 times more powerful than sonic devices! EndoUltra™ is the only cordless activator unit capable of generating the tip frequency (40,000 Hz) required to create sufficient acoustical streaming and the cavitation necessary to effectively clean, penetrate and remove vapor lock.

- Promotes penetration of irrigants into dental tubules and canal complexities
- Disrupts biofilm and removes vapor lock
- Easily incorporated into an existing endo irrigation protocol



PRODUCT	SKU
Complete Kit	407702-2
Includes: (1) cordless handpiece, (3) titanium activator tips – 20/02, (3) autoclavable handpiece sleeves, (100) disposable barrier sleeves, (1) tip wrench, (1) charger	
(3) EndoUltra™ Activator Tips	407706-2
(2) Replacement Nosecones	407709-2
(100) Disposable Barrier Sleeves	407719-2
Tip Wrench	407711-2
USB Wall Adapter	4009
USB to Micro USB Cable	4017

Looking For Piezo Tips?

See our full selection in the Piezo Ultrasonics section, page 45.



General
Scalers



Periodontal
Scalers



Endodontic
Tips



Apical
Surgery Tips

FREE STANDARD SHIPPING ON ORDERS OVER \$400 | CALL TOLL FREE 877.418.4782 OR VISIT VISTAPEX.COM



IMPACT AIR 45[®] EQUIPMENT

Newly acquired in 2021, Impact Air 45[®] Handpieces and Accessories are specifically designed for surgical procedures, by exhausting all air away from the surgical site and preserving the sterile environment. Each handpiece has been handcrafted in the U.S. for nearly 40 years. The Impact Air 45[®] is also designed for use in periodontal and endodontic procedures, such as Apicoectomy, Osteoplasty, Odontoplasty and Root Resection.

- Impact Air 45[®] Handpieces
- Impact Air 45[®] Quick Disconnect Couplers
- Impact Air 45[®] Quick Disconnect Parts
- Impact Air 45[®] Burs
- Impact Air 45[®] Cleaning & Maintenance Kit
- Impact Air 45[®] Parts
- Impact Air 45[®] Gaskets
- Impact Air 45[®] Adapter
- Impact Air 45[®] Lubricant

Impact Air 45® Equipment



Impact Air 45® Highspeed Handpieces

The IMPACT AIR 45® has a unique 45° angled head, allowing for maximum access and visibility. It is available with fiberoptics, is fully autoclavable, has an office-replaceable turbine (minimizing downtime) and uses standard friction grip burs (featuring a push-button bur release).

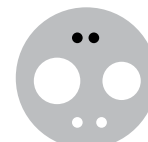
The IMPACT AIR 45® is also designed for use in periodontal and endodontic procedures, including Apicoectomy (root canal drainage), Osteoplasty (bony contouring), Odontoplasty and Root Resection.

A water or saline line inside the handpiece handle directs a pure water jet (not a mist) directly onto the cutting area. Air is exhausted through the back of the handpiece.

- Fits A.D.A. Standard Coupling Types
- I.S.O. Type A (3 hole)
- I.S.O. Type B (4 hole or 5 hole fiberoptic)
- Fits our 4 hole, 5 hole, or 6 pin coupler or an equivalent KaVo MULTiflex® style coupler
- Compatible with friction grip shank burs (.0627" - .0630" diameter shank)
- Supply Requirements: Dry filtered air or nitrogen
- Operating Pressure: 32psi - 40psi
- Speed: 400,000-500,000 rpm
- Chuck type: Mid-spindle, tooth-jawed grip



HOSING CONNECTIONS



I.S.O. Type C
(6 Pin)
(with adapter)



I.S.O. Type B
(4 Hole)



I.S.O. Type B
(5 Hole)

PRODUCT	SKU
#401 Impact Air 45® Highspeed Fiberoptic Handpiece (5 Hole)	DE-401-FO
Includes: (1) Impact Air® 45 Fiberoptic Handpiece, (1) Head Cap Wrench	
#403 Impact Air 45® Highspeed Handpiece (4 Hole)	DE-403-4H
Includes: (1) Impact Air 45® Highspeed 4 Hole Handpiece, (1) Head Cap Wrench	
#407 Impact Air 45® Quick Disconnect Highspeed Fiberoptic Handpiece	DE-407-FO-QD
Includes: (1) Impact Air 45® Quick Disconnect Highspeed Fiberoptic Handpiece, (1) Head Cap Wrench	
#408 Impact Air 45® Quick Disconnect Highspeed Non-Optic Handpiece	DE-408-QD
Includes: (1) Impact Air 45® Quick Disconnect Highspeed Non-Optic Handpiece, (1) Head Cap Wrench	

Vista Apex is the only authorized repair facility for the IMPACT AIR 45®.
Contact us at 877.418.4782 for all your handpiece servicing needs.

FREE STANDARD SHIPPING ON ORDERS OVER \$400 | CALL TOLL FREE 877.418.4782 OR VISIT VISTAPEX.COM

Impact Air 45® Equipment

IMPACT AIR 45® Accessories



Quick Disconnect Couplers

For the Impact Air 45® Quick Disconnect.



PRODUCT	SKU
#627 Quick Disconnect Fiberoptic Coupler (compatible with 6 pin hose)	DE-627COUPLER
#628 Quick Disconnect Fiberoptic Coupler (compatible with 4 hole hose)	DE-628COUPLER
#629 Quick Disconnect Fiberoptic Coupler (compatible with 5 hole hose)	DE-629COUPLER



Quick Disconnect Parts

For the Impact Air 45® Quick Disconnect.



PRODUCT	SKU
#630 Quick Disconnect Coupler O-Ring	DE-630
#631L Quick Disconnect Replacement "L" Bulb	DE-631L
#631V Quick Disconnect Replacement "V" Bulb	DE-631V
#632 Quick Disconnect 6-Pin Coupler Gasket	DE-632
#633 Quick Disconnect 4-Hole Coupler Gasket	DE-633



Burs

For all Impact Air 45® handpieces.



PRODUCT	SKU
#500 Surgical Length FG (25mm) Bur (5Pk) <i>Includes: (1) #4 bur, (1) #6 bur, (1) #701 bur, (1) #702 bur, (1) #1701 bur and (1) #1702 bur</i>	DE-500BUR-KIT
#514 #6 Surgical Length FG (25mm) Bur (5Pk)	DE-514BUR6
#515 #1702 Surgical Length FG (25mm) Bur (5Pk)	DE-515BUR1702
#516 #1703 Surgical Length FG (25mm) Bur (5Pk)	DE-516BUR1703
#517 #702 Surgical Length FG (25mm) Bur (5Pk)	DE-517BUR702

Cleaning & Maintenance Kit

For any Impact Air 45® handpieces.



PRODUCT	SKU
#638 IMPACT AIR 45® Cleaning & Maintenance Kit <i>Includes: (1) Spindle Cleaner, (1) Sample Lubricant Bottle, (1) Head Cap Wrench, (1) Blue Fluorosilicone O-Ring, (1) Black Viton O-Ring, (1) 0.005 Teflon Washer, (1) 0.015 Teflon Washer</i>	DE-638

SCAN THE QR CODE TO GO DIRECTLY TO EACH PRODUCT LISTING OR VISIT VISTAAPLEX.COM TO START YOUR ORDER!

ORDER ANYTIME THROUGH YOUR PREFERRED DEALER

Impact Air 45® Equipment

IMPACT AIR 45® Accessories



#601



#603



#608

#614



#622

#623

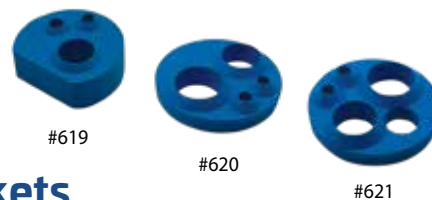
#626



Parts

For any Impact Air 45® standard handpiece.

PRODUCT	SKU
#601 Model 9 Conversion Kit	DE-601CONV
Includes: (1) M9 Turbine Assembly, (1) Head Cap Assembly, (1) Head Cap Wrench, (1) Blue Fluorosilicone O-Ring, (1) Black Viton O-Ring, (1) 0.005 Teflon Washer, (1) 0.015 Teflon Washer	
#603 Model 9 Turbine Kit	DE-603TURB
Includes: (1) M9 Turbine Assembly, (1) Blue Fluorosilicone O-Ring, (1) Black Viton O-Ring, (1) 0.005 Teflon Washer, (1) 0.015 Teflon Washer	
Note: Does not include cap wrench	
#608 Model 9 Chuck Kit	DE-608CHUCK
#614 Model 9 Head Cap/Wrench Kit	DE-614CAP
Includes: (1) Head Cap Assembly, (1) Head Cap Wrench	
#622 Turbine O-Ring Kit	DE-622ORING
Includes: (1) Blue Fluorosilicone O-Ring, (1) Black Viton O-Ring	
#623 Model 9 Teflon Washer Kit	DE-623WASHER
Includes: (1) 0.005 Teflon Washer, (1) 0.015 Teflon Washer	
#626 Lamp Module For Adapter Kit	DE-626LAMP



#619

#620

#621

Gaskets

For any Impact Air 45® standard handpiece.



PRODUCT	SKU
#619 Rear Coupling Gasket 2-Hole Kit	DE-619GASKET2
#620 Rear Coupling Gasket 4-Hole Kit	DE-620GASKET4
#621 Rear Coupling Gasket Fiberoptic Kit	DE-621GASKETFO

Adapter

For use with the Impact Air 45® or any 4 or 5 hole handpiece on the market.

- Converts your 5 hole style fiberoptic handpieces to the 6-pin fiberoptic hose system
- Compact design
- Easy installation
- Does not affect light quality



PRODUCT	SKU
#625 IMPACT AIR 45® 6-Pin Universal Adapter Kit	DE-625ADAPTER

Lubricant

For all Impact Air 45® handpieces.

- Penetrates and cleans
- Lubricates
- Protects
- 2,000+ applications per bottle



PRODUCT	SKU
#618 2 Fl. Oz. IMPACT AIR 45® Autoclavable Lubricant	DE-618LUBE



FREE STANDARD SHIPPING ON ORDERS OVER \$400 | CALL TOLL FREE 877.418.4782 OR VISIT VISTAPEX.COM



PIEZO ULTRASONICS

Vista Apex's ultrasonic tips are designed to fit all major Piezo scaling units. Vista Apex offers a vast selection of tips for applications ranging from hygiene, periodontal, restorative and endodontics.

- General Scaling Tips
- H Series Periodontal Tips
- PT Series Periodontal Tips
- Anterior & Posterior Apical Surgery Tips
- Restorative Tips
- Retreatment Tips

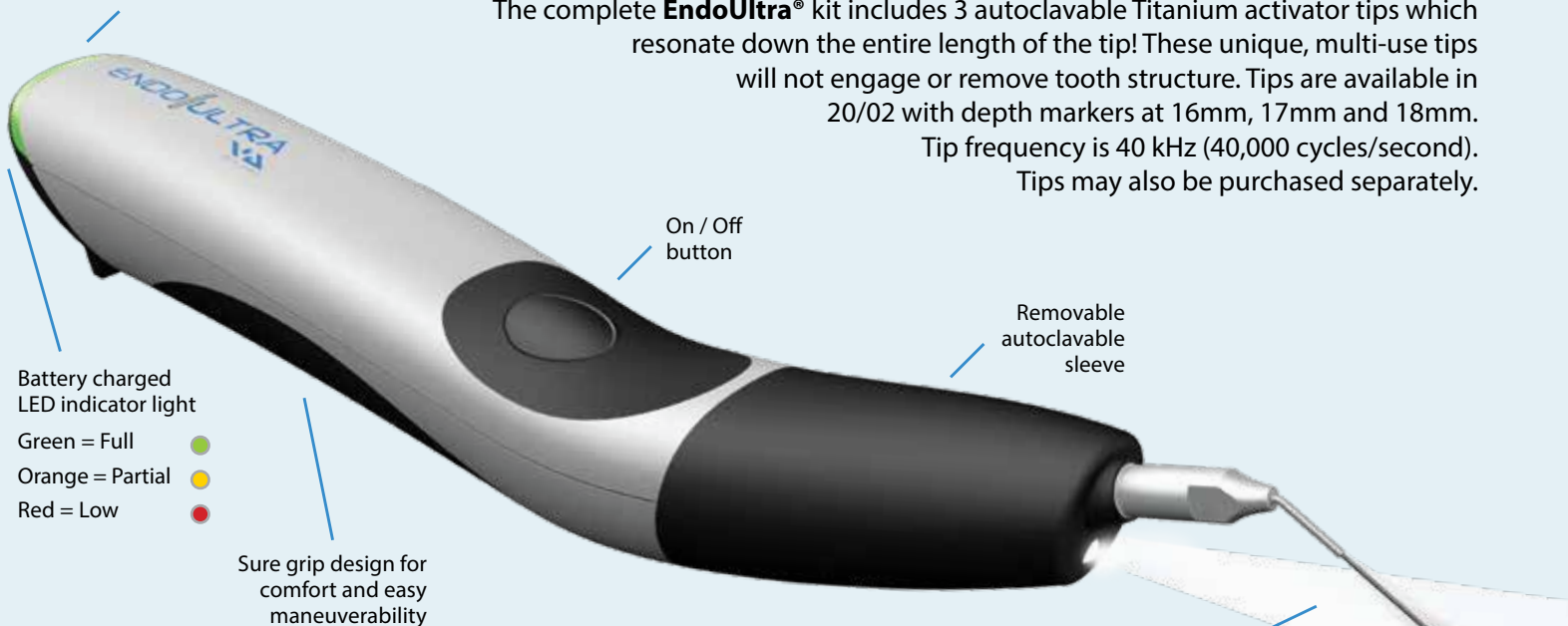
ENDO|ULTRA®

The **EndoUltra® Cordless Handheld Device** produces ultrasonic tip frequency of 40,000 Hz (200x faster than sonic devices)!

EndoUltra® by Vista Apex harnesses ultrasonic technology in a compact, easy-to-use and cordless handheld device! **EndoUltra®** is the only cordless activator unit capable of generating the tip frequency (40,000 Hz) required to create sufficient acoustical streaming and the cavitation necessary to effectively clean, penetrate and remove vapor lock.

The complete **EndoUltra®** kit includes 3 autoclavable Titanium activator tips which resonate down the entire length of the tip! These unique, multi-use tips will not engage or remove tooth structure. Tips are available in 20/02 with depth markers at 16mm, 17mm and 18mm. Tip frequency is 40 kHz (40,000 cycles/second). Tips may also be purchased separately.

Cordless easy-to-use, ultrasonic activation



On / Off button

Removable autoclavable sleeve

Battery charged LED indicator light

Green = Full

Orange = Partial

Red = Low

Sure grip design for comfort and easy maneuverability

LED light for improved visualization

Autoclavable Titanium 20/02 Activator Tips

Ultra *EFFECTIVE*

Better penetration to every part of the canal!

Ultra *EFFICIENT*

Better cleaning in less time!

Ultra *SONIC*

Better acoustic streaming with cavitation!



VISTA | APEX



SCAN THE QR CODE TO GO DIRECTLY TO THE PRODUCT LISTING
VISIT VISTAAPEX.COM | CALL TOLL FREE 877.418.4782

Piezo Ultrasonics

General Scalers

Our Most Popular Light To Heavy-Duty Tips

SU1 - Light to medium-heavy supra-gingival calculus removal

Ideal for light to medium-heavy cases of supra-gingival calculus: Produces a smoothly scaled surface with minimal need for secondary hand instrumentation. Use the side radius of the initial 2-3mm of the tip in a sweeping motion on the tooth enamel. † Comes with tip wear marking.



SU2 - Heavy supra-gingival calculus removal

Flat edge for removing high density deposits: Use to sheer off calculus, use an up-and-down motion with the flat edge of the top of tip and the side of tip perpendicular to tooth surface.



SU3 - Tobacco, coffee and other stain removal

Rounded edge for stain removal: Use to sheer off stubborn stains, use an up-and-down motion with the rounded edge of the top of the tip and the side of tip on the surface of the tooth.



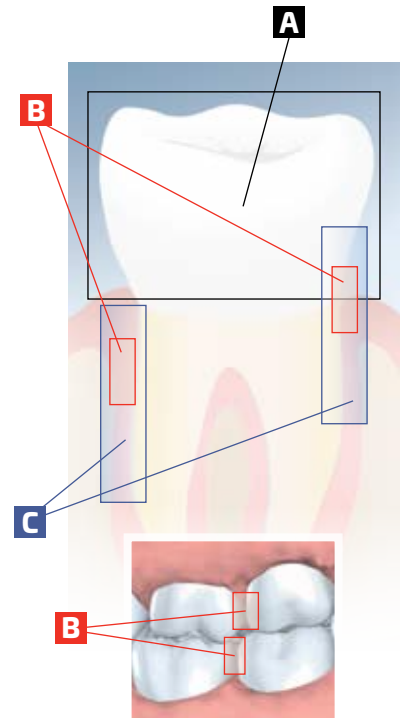
SU5 - Interproximal scaling

Thin tip design: The thin design of this tip permits easier entry into most interproximal spaces.



SU6 - Sub-gingival scaling

Long tip design: Long, thin tip design for less invasive entry into sub-gingival pockets. Produces reduced patient sensitivity. † Comes with tip wear marking.



If You Use:

	Tip A, DS001A	Tip C, DS-002A	Tip B, DS-003A	—	Tip P, DS-011A
EMS® Style	1	2	3	10X	10Z
Aceton® Style	S10	—	—	—	100
Hu-Friedy® Style	G1	G2	G3	G5	G6
NSK® Style	1	2	3	10X	10Z
Tulsa® Style	■ SU1	■ SU2	■ SU3	■ SU5	■ SU6
Thread Style					
EMS® Style SKU	502101-2	502609-2	502610-2	502608-2	502409-2
Aceton® Style SKU	401101-2	401609-2	401610-2	401608-2	401409-2
Use For:	Light to medium Supra-gingival calculus	High density Supra-gingival calculus	Stain removal	Designed for easy interproximal scaling	Sub-gingival scaling

For Use
With:

EMS® Style: Mini Piezon®, Scalex 880®, Bonart®, SuperSon EIE®, Master 400®, Parkel (Piezo)®, Dent America®

Aceton® Style: Vista P5®, NSK®, Sybron Endo®, Obtura Spartan®, ADEC®, J.Morita®, Dentsply/Tulsa®, Amdent®, Ultradent®

Call 877.418.4782 for tip compatibility with other units. *Not a registered trademark of Vista Apex.

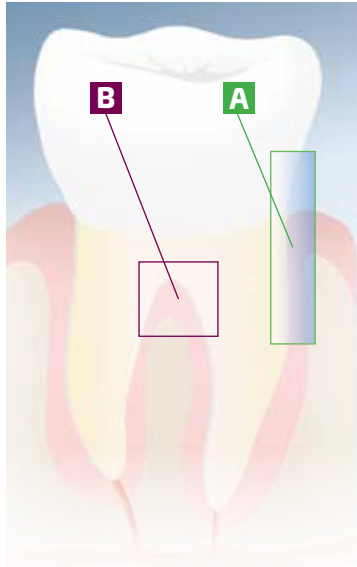
SCAN THE QR CODE TO GO DIRECTLY TO EACH PRODUCT LISTING OR VISIT VISTAAPEX.COM TO START YOUR ORDER!

ORDER ANYTIME THROUGH YOUR PREFERRED DEALER

Piezo Ultrasonics

Periodontal Scalers

"H" Series (Hygiene) and "PT" Series (Perio Thin)



"H" Series



"PT" Series

A



HC - Universal curette design *(comes with tip wear marking)*

Designed for deep pocket access. Ideal for sub- and supra-gingival scaling. Powerful enough for medium to heavy calculus removal. Use edge of tip to guide motion for smooth results.

PTU - Sub-lingual pocket scaling *(comes with tip wear marking)*

Thin tip for sub-lingual scaling; simulates natural curvature of a tooth to provide easy access into pockets with minimal patient discomfort. This universal tip is extremely thin to minimize patient sensitivity and create a smoothly scaled surface.

PTL / PTR - Sub-lingual scaling *(PTL - Left Bend / PTR - Right Bend)*

Used for lower-left and upper-right molars and pre-molars. Also effective for scaling interproximal spaces between molars.

B



HFL / HFR - Light scaling of difficult areas

(Diamond-coated) (HFL - Left Bend / HFR - Right Bend)

Use on furcations and interproximal sides of molars and pre-molars. Proper use requires non-foot pedal actuated placement, followed by activating foot pedal, scaling, releasing foot pedal and removal of tip. Use at low power settings.



If You Use:

EMS** Style	—	—	—	PL2, DS-031A	PL1, DS-030A	Tip PS, DS-016A
Aceton** Style	H1	H2L	H2R	PFL	PFR	PFU
Hu-Friedy** Style	1D	4L	4R	—	—	U Perio
NSK** Style	P1D	P3D	P2D	P21L	P21R	P20
Tulsa** Style	H1	H2L	H2R	PFL	PFR	PFU
Thread Style	■ HC	■ HFL	■ HFR	■ PTL	■ PTR	■ PTU
EMS** Style SKU	502103-2	502203-2	502204-2	502201-2	502202-2	502104-2
Aceton** Style SKU	401103-2	401203-2	401204-2	401201-2	401202-2	401104-2
Use For:	Universal curette design for sub- and supra-gingival calculus	Left Bend Light scaling of hard-to reach areas (furcations and interproximal)	Right Bend Light scaling of hard-to reach areas (furcations and interproximal)	Left Bend Sub-lingual pocket scaling of molars and pre-molars	Right Bend Sub-lingual pocket scaling of molars and pre-molars	Sub-lingual pocket scaling

For Use With:

EMS* Style: Mini Piezon*, Scalex 880*, Bonart*, SuperSon EIE*, Master 400*, Parkel (Piezo)*, Dent America*

Aceton* Style: Vista P5*, NSK*, Sybron Endo*, Obtura Spartan*, ADEC*, J.Morita*, Dentsply/Tulsa*, Amdent*, Ultradent*

Call for tip compatibility with other units. *Not a registered trademark of Vista Apex.

FREE STANDARD SHIPPING ON ORDERS OVER \$400 | CALL TOLL FREE 877.418.4782 OR VISIT VISTAPEX.COM

Piezo Ultrasonics

Anterior Surgery Tips

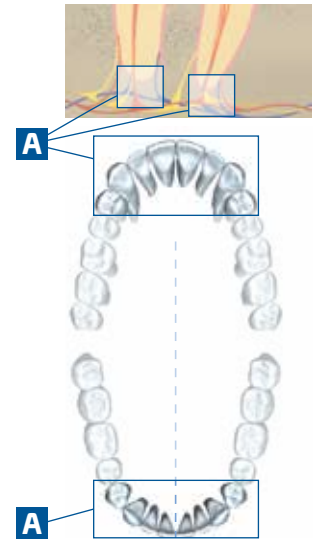
S70D / S90D / SAD - Anterior Teeth

Diamond-coated to offer greater durability and provide more abrasive power.



If You Use:

EMS® Style	—	—	—
Aceton® Style	S12-70D	S12-90D	S12-70D
Hu-Friedy® Style	—	—	—
NSK® Style	E32D	E31D	—
Tulsa® Style	SURG1	SURG2	—
Thread Style	■ S70D	■ S90D	■ SAD
EMS® Style SKU	502306-2	502303-2	502626-2
Aceton® Style SKU	401306-2	401303-2	401626-2
Tip Coating:	Diamond	Diamond	Diamond
Use For:	70° angle - generally used on anterior teeth	90° angle - generally used on anterior teeth	Universal design - generally used on anterior teeth



Posterior Surgery Tips

SPL / SPR - Posterior Teeth

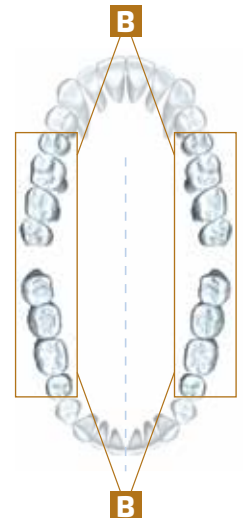
SPLD / SPRD - Posterior Teeth

Diamond-coated to offer greater durability and provide more abrasive power.



If You Use:

EMS® Style	—	—	—	—
Aceton® Style	S13LD	S13L	S13RD	S13R
Hu-Friedy® Style	—	—	—	—
NSK® Style	E30LD	—	E30RD	—
Tulsa® Style	SURG3	—	SURG4	—
Thread Style	■ SPLD	■ SPL	■ SPRD	■ SPR
EMS® Style SKU	502304-2	502404-2	502305-2	502405-2
Aceton® Style SKU	401304-2	401404-2	401305-2	401405-2
Tip Coating:	Diamond	None	Diamond	None
Use For:	Left angle - generally used on posterior teeth		Right angle - generally used on posterior teeth	



**For Use
With:**

EMS® Style: Mini Piezon®, Scalex 880®, Bonart®, SuperSon EIE®, Master 400®, Parkel (Piezo)®, Dent America®

Aceton® Style: Vista P5®, NSK®, Sybron Endo®, Obtura Spartan®, ADEC®, J.Morita®, Dentsply/Tulsa®, Amdent®, Ultradent®

Call 877.418.4782 for tip compatibility with other units. *Not a registered trademark of Vista Apex.

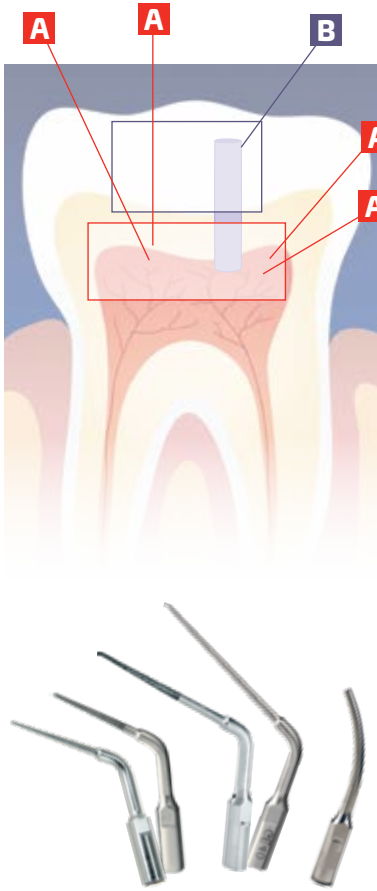
SCAN THE QR CODE TO GO DIRECTLY TO EACH PRODUCT LISTING OR VISIT VISTAAPEX.COM TO START YOUR ORDER!

ORDER ANYTIME THROUGH YOUR PREFERRED DEALER

Piezo Ultrasonics

Restorative Scalers

Versatile Tips For Retreatment and Restorative Procedures



Restorative Tips

GEBD-1 / GEBD-2 (Ball shaped) + GEFD-2 (Football shaped)

Versatile tips are ideal for use in a wet or dry field.
Applications: refining axial walls, caries removal, cleaning pulp chamber, sanding dentin, finishing access cavity, and sanding and finishing restoratives.



If You Use:

EMS® Style	—	—	—
Aceton® Style	—	ETBD	—
Hu-Friedy® Style	S10	—	—
NSK® Style	—	—	—
Tulsa® Style	SINE 3	SINE 4	SINE 6
Thread Style	■ GEBD-1	■ GEBD-2	■ GEFD-2
EMS® Style SKU	502641-2	502642-2	502644-2
Aceton® Style SKU	401641-2	401642-2	401644-2
Shape:	Small ball shape	Large ball shape	Large football shape
Tip Coating:	Diamond	Diamond	Diamond



If You Use:

EMS® Style	RT3	RT2	—	—	D
Aceton® Style	ETD20	ET20	ETD40	ET40	5AE
Hu-Friedy® Style	—	—	—	—	—
NSK® Style	E7D	E7	E8D	E8	—
Tulsa® Style	SINE 1	—	—	—	5AE
Thread Style	■ GE20D	■ GE20	■ GE40D	■ GE40	■ PRT
EMS® Style SKU	502301-2	502401-2	502302-2	502402-2	502623-2
Aceton® Style SKU	401301-2	401401-2	401302-2	401402-2	401623-2
Tip Coating:	Diamond	None	Diamond	None	None

Retreatment Tips

GE20 / GE20D (20mm tip to bend) +
GE40 / GE40D (40mm tip to bend)

Versatile tips are ideal for use
in a wet or dry field.

Applications: refining axial walls,
caries removal, cleaning pulp chamber,
sanding dentin, finishing access cavity,
and sanding and finishing restoratives.

PRT (Post removal tip)

Ideal for loosening of posts
with ultrasonic irrigation.

Irrigation is recommended as a cooling
agent when removing crowns and posts.

For Use With:

EMS® Style: Mini Piezon®, Scalex 880®, Bonart®, SuperSon EIE®, Master 400®, Parkel (Piezo)®, Dent America®

Aceton® Style: Vista P5®, NSK®, Sybron Endo®, Obtura Spartan®, ADEC®, J.Morita®, Dentsply/Tulsa®, Amdent®, Ultradent®

Call for tip compatibility with other units. *Not a registered trademark of Vista Apex.

FREE STANDARD SHIPPING ON ORDERS OVER \$400 | CALL TOLL FREE 877.418.4782 OR VISIT VISTAPEX.COM



PREPARATION

Vista Apex combines research and innovation to deliver the best solutions in Restorative Dentistry. Our complete line of restorative products sets an impressive new standard, offering advanced control and predictability while providing dentists with reliable and affordable products.

- Caries Indicator Vista-Red™ & Vista-Green™
- DesensiMAX

Preparation

FEATURED PRODUCT



DesensiMAX

Vista Apex formulated a fast-acting desensitizer, which can be used with total etch and selective etch adhesive systems. Additionally, DesensiMAX treats sensitivity resulting from exposed dentin.

- Virtually eliminates sensitivity INSTANTLY
- Rewets the tooth surface to provide optimal moisture levels for bonding
- Provides fluoride at the restorative-tooth interface to provide a zone of inhibition to prevent secondary decay
- Inhibits MMPs, giving you better bond longevity



PRODUCT	SKU
DesensiMAX	90413
<i>Includes: (1) 10mL bottle, (1) single-cavity well, (25) applicators</i>	



Caries Indicator

Vista-RED™ and Vista-GREEN™

Glycol-based solution to facilitate removal of carious dentin. Ensures maximum amount of inner dentin is preserved and infected dentin is removed.



VISTA-RED™	SKU
Standard Kit	502700-2
<i>Includes: (4) 1.2mL prefilled syringes, (20) Sol-u-Flo™ tips</i>	
Refill Value Pack	502705-2
<i>Includes: (4) 1.2mL prefilled syringes</i>	
Value Pack	503450-2
<i>Includes: (20) 1.2mL prefilled syringes</i>	

VISTA-GREEN™	SKU
Standard Kit	502750-2
<i>Includes: (4) 1.2mL prefilled syringes, (20) Sol-u-Flo™ tips</i>	
Refill Value Pack	502755-2
<i>Includes: (4) 1.2mL prefilled syringes</i>	
Value Pack	503500-2
<i>Includes: (20) 1.2mL prefilled syringes</i>	

FREE STANDARD SHIPPING ON ORDERS OVER \$400 | CALL TOLL FREE 877.418.4782 OR VISIT VISTAPEX.COM



TIPS & SYRINGES

Vista Apex offers high quality tips and syringes for various applications and materials. Vista Apex tips are designed to improve clinical outcomes, increase safety and reduce waste – all while saving you money over other leading brands. No matter the application, we have the tips and syringes for you!

- **Delivery Tips** (Pre-Bent, Micro-Flo™, Volu-Flo™, Blue-Flo™, 1/2" Bendable Applicator, MST Universal Pre-Bent, MST Visco-Tip™ and Appli-Vac™ 3/4" Applicator Tips)
- **Brush Tips** (Stat-Flo™, Spira-Flo™, Exacta-Flo™ and Sol-U-Flo™ Tips)
- **Endodontic Tips** (Appli-Vac™ 1" Irrigating, Flexi-Guide™ Utility, Secure-Lock™ Appli-Vac™ 1" Irrigating, NiTi SuperFlex™, Vista-Probe™ 1" Bendable Irrigating, Secure-Lock™ Vista-Probe™ 1" Bendable Irrigating, Pocket-Probe™ and Elasti-Vac™ Tips)
- **Syringes** (Appli-Vac™ Pre-Tipped, Vista-Probe™ Pre-Tipped, US-12 Utility, 6cc Dripless, Colored Luer-Lock, Luer-Lock, Impression and Aspirating Syringes)
- **Accessories** (Air/Water Syringe Tips, Syringe Caps, Stropko™ Irrigators, Versa-Brush™, Syringe Tip Covers)

Tips & Syringes

KEY

D Delivery Tips

B Brush Tips

E Endodontic Tips

Quantity Options Available

KEY

D 100

Pre-Bent Tips

Ideal for use with etchants, resins, and flowable composites.

- Opaque photo-sensitive hub
- Blunt end, pre-bent needle tips
- Universal luer-lock hub



PRODUCT	SKU
○ (100) 16ga Pre-Bent Tips	315316-2
● (100) 20ga Pre-Bent Tips	315320-2
● (100) 22ga Pre-Bent Tips	315322-2
● (100) 25ga Pre-Bent Tips	315325-2

D 50



Micro-Flo™ Tips

Perfect tip for magnification enhanced procedures.

Ideal for controlled microscopic delivery of etchants and composites in most micro-restorative procedures.

- Bendable needle offers greater access
- Disposable, polyimide tip provides unsurpassed delivery

PRODUCT	SKU
(50) 26ga Micro-Flo™ Tips	406626-2
(50) 27.5ga Micro-Flo™ Tips	406627-2
(50) 30ga Micro-Flo™ Tips	406630-2

D 100

Volu-Flo™ Tips

Large 18ga tip opening to allow easy extrusion of viscous materials.

- Designed to deliver large volumes of material
- Photo sensitive opaque tip maintains the flow of light-cured materials
- Universal luer-lock hub



PRODUCT	SKU
(100) 18ga Volu-Flo™ Tips	321100-2

D 100 20

Blue-Flo™ Tips

Ideal for irrigation, aeration and impression materials.

- Opaque photo-sensitive hub
- Blunt end, pre-bent needle tips
- Universal luer-lock hub
- 23ga soft plastic tip



PRODUCT	SKU
(20) 23ga Blue-Flo™ Tips	316202-2
(100) 23ga Blue-Flo™ Tips	316222-2

D 100

1/2" Bendable Applicator Tips

Ideal for etchants, resins and flowable composites.

- Universal luer-lock hub
- Blunt end, dead-soft needle resists crimping



PRODUCT	SKU
● (100) 22ga 1/2" Bendable Applicator Tips	315222-2
● (100) 25ga 1/2" Bendable Applicator Tips	315225-2

FREE STANDARD SHIPPING ON ORDERS OVER \$400 | CALL TOLL FREE 877.418.4782 OR VISIT VISTAPEX.COM

Tips & Syringes

KEY

D Delivery Tips **B** Brush Tips **E** Endodontic Tips
Quantity Options Available

KEY

MST Universal Pre-Bent Tips

Conventional application tips trap a significant amount of material inside, sometimes causing more material to be wasted in the tip than is used clinically.

Vista Apex developed this patent-pending technology for minimal waste of your costly materials. The unique design minimizes the internal volume of the tip, **greatly reducing waste, up to 87%!** This means that materials go further, and you can **use more of what you paid for!**

- 22ga pre-bent stainless steel delivery tip
- Improves flow for easy, predictable delivery
- Non-clogging design

PRODUCT	SKU
(100) 22ga MST Universal Pre-Bent Tips	315310-2



D 100



The xray shows the amount of wasted material in a conventional delivery tip (left) vs. a tip featuring MST (right)



FEATURED PRODUCT



D 100

Appli-Vac™ 3/4" Bendable Applicator Tips

Ideal application tips for sealants, irrigating, aspirating, air/water delivery, flowable composites, etchants, resins, primers and more.

- Blunt end, dead-soft needle resists crimping
- Extended 3/4" length for pockets, fistulas and surgical sites
- Universal luer-lock hub



PRODUCT	SKU
○ (100) 16ga Appli-Vac™ 3/4" Bendable Applicator Tips	315116-2
● (100) 18ga Appli-Vac™ 3/4" Bendable Applicator Tips	315118-2
● (100) 19ga Appli-Vac™ 3/4" Bendable Applicator Tips	315119-2
● (100) 20ga Appli-Vac™ 3/4" Bendable Applicator Tips	315120-2
● (100) 22ga Appli-Vac™ 3/4" Bendable Applicator Tips	315122-2
● (100) 25ga Appli-Vac™ 3/4" Bendable Applicator Tips	315125-2

D 50 20

MST Visco-Tips™

The ideal solution to get the best value from costly materials.

MST Visco-Tip™ is a bendable, flexible 25ga tip that improves the flow and placement of viscous materials such as Bioceramic sealers and Calcium Hydroxide.

- Bendable, 25ga delivery tip
- Improves flow for easy, predictable delivery
- Non-clogging design

PRODUCT	SKU
(20) 25ga MST Visco-Tips™	312302-2
(50) 25ga MST Visco-Tips™	312300-2



SCAN THE QR CODE TO GO DIRECTLY TO EACH PRODUCT LISTING OR VISIT VISTAAPEX.COM TO START YOUR ORDER!

ORDER ANYTIME THROUGH YOUR PREFERRED DEALER

Tips & Syringes

KEY

D Delivery Tips

B Brush Tips

E Endodontic Tips

Quantity Options Available

KEY

FEATURED PRODUCT

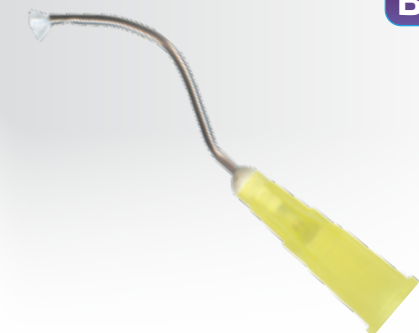
B 500 100 20

Stat-Flo™ Brush Tips

Ideal for delivery of hemostatic agents.

- Curved cannula for optimal visibility
- Precision placement of hemostatic agents
- Padded-end brush tip controls flow
- Universal luer-lock hub

PRODUCT	SKU
(20) Stat-Flo™ Brush Tips	312102-2
(100) Stat-Flo™ Brush Tips	312100-2
(500) Stat-Flo™ Brush Tips	312105-2



B 500 100

Spira-Flo™ Brush Tips

Ideal for controlled placement of materials in restorative procedures.

Nylon brush fiber for controlled delivery of viscous material, etchants and resins.

- Universal luer-lock hub
- Minimizes bubbles
- Adjustable brush tip fiber length
- Curved cannula for optimal entry
- Internal spiral channel



PRODUCT	SKU
(100) Spira-Flo™ Brush Tips	321400-2
(500) Spira-Flo™ Brush Tips	321450-2



B 500 100

Exacta-Flo™ Brush Tips

Ideal for the precise and smooth delivery of aqueous solutions.

- Minimizes bubbles
- Universal luer-lock hub

PRODUCT	SKU
(100) Exacta-Flo™ Brush Tips	321610-2
(500) Exacta-Flo™ Brush Tips	321650-2



B 500 100

Sol-u-Flo™ Applicator Tips

Ideal for use with low viscosity solutions.

- 19ga tip with adjustable brush fiber length
- Curved cannula for optimal entry
- Universal luer-lock hub
- Nylon bristle end enables controlled delivery of solution

PRODUCT	SKU
(100) Sol-u-Flo™ Applicator Tips	312200-2
(500) Sol-u-Flo™ Applicator Tips	312205-2



FREE STANDARD SHIPPING ON ORDERS OVER \$400 | CALL TOLL FREE 877.418.4782 OR VISIT VISTAPEX.COM

ORDER ANYTIME THROUGH YOUR PREFERRED DEALER

Tips & Syringes

KEY

D Delivery Tips **B** Brush Tips **E** Endodontic Tips
Quantity Options Available

KEY

Appli-Vac™ 1" Irrigating Tips

E 100 20

Ideal for Periodontal (23ga) and Endodontal irrigating solutions.

- Slotted and side-vented for safe irrigation
- Universal luer-lock hub
- Tips come individually capped
- Also available on Appli-Vac™ Pre-Tipped Syringes

PRODUCT	QTY 20 SKU	QTY 100 SKU
● 23ga Appli-Vac™ 1" Irrigating Tips	315023-2	315523-2
● 27ga Appli-Vac™ 1" Irrigating Tips	315027-2	315527-2
● 30ga Appli-Vac™ 1" Irrigating Tips	315030-2	315530-2



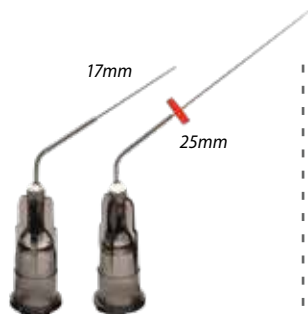
FEATURED PRODUCT

E 6

NiTi SuperFlex™ Irrigating Tips

Ideal dental tip for use with Vista Apex's complete line of Endodontic solutions.

- Slotted and side-vented for safe irrigation
- 2.5X more flexible
- Longer life cycle with less clogging
- 30ga nickel-titanium irrigating needle tips
- Adjustable needle angle for maximum flexibility
- Autoclavable for cost-effective repeated use



PRODUCT	SKU
(6) Short (17mm) NiTi SuperFlex™ Tips	405107-2
(6) Long (25mm) NiTi SuperFlex™ Tips	405108-2
Mixed Pack NiTi SuperFlex™ Tips	405106-2

Includes: (4) Short (17mm) tips, (2) Long (25mm) tips

E 80

Secure-Lock™ Appli-Vac™ 1" Irrigating Tips

Ideal for irrigation of canals, pockets and fistulas.

- Slotted and side-vented for safe irrigation
- Universal luer-lock hub with Secure-Lock™ threads to lock tip in place for increased safety, ease of use and reduced risk of cross-contamination
- Tips come individually capped



PRODUCT	SKU
● (80) 23ga Secure-Lock™ Appli-Vac™ Irrigating Tips	314523-2
● (80) 27ga Secure-Lock™ Appli-Vac™ Irrigating Tips	314527-2
● (80) 30ga Secure-Lock™ Appli-Vac™ Irrigating Tips	314530-2

E 50 20

Flexi-Glide™ Utility Tips

Ideal for Endodontal irrigating solutions.

- Universal luer-lock hub
- 30ga disposable (single use) tip
- Flexible, bendable needle facilitates access
- Tip can be cut to desired length



PRODUCT	SKU
(20) Flexi-Guide™ Utility Tips	406320-2
(50) Flexi-Guide™ Utility Tips	406350-2

SCAN THE QR CODE TO GO DIRECTLY TO EACH PRODUCT LISTING OR VISIT VISTAAPEX.COM TO START YOUR ORDER!

ORDER ANYTIME THROUGH YOUR PREFERRED DEALER

Tips & Syringes

KEY

D Delivery Tips

B Brush Tips

E Endodontic Tips

Quantity Options Available

KEY

FEATURED PRODUCT

E 100 20

Vista-Probe™ 1" Bendable Irrigating Tips

Ideal for Periodontal (23ga) and Endodontal irrigating solutions.

- Closed-end tip for side-port delivery, the lateral delivery of irrigants reduces apical pressure
- Universal luer-lock hub
- Use with Vista-Probe™ Pre-Tipped Syringes



PRODUCT	QTY 20 SKU	QTY 100 SKU
● 23ga Vista-Probe™ 1" Bendable Irrigating Brush Tips	315123-2	315623-2
● 27ga Vista-Probe™ 1" Bendable Irrigating Brush Tips	315127-2	315627-2
● 30ga Vista-Probe™ 1" Bendable Irrigating Brush Tips	315130-2	315630-2

E 50

Elasti-Vac™ Tips

Ideal for Endodontic evacuation.

- Universal luer-lock hub
- Easily attached to a luer HVE adapter, allowing for connection to high or low speed suction valves
- Micro-evacuation allows for quick and easy removal of moisture from endodontic canal systems, minimizing the need for paper points
- Designed in a translucent material, the tip allows for visualization of the suction path



PRODUCT	SKU
(50) Elasti-Vac™ Tips	406150-2

Secure-Lock™ Vista-Probe™ 1" Bendable Irrigating Tips

Ideal for irrigation.

- Universal luer-lock hub with Secure-Lock™ threads to lock tip in place for increased safety, ease of use and reduced risk of cross-contamination
- Tips come individually capped
- Closed-end tip for side-port delivery



E 80

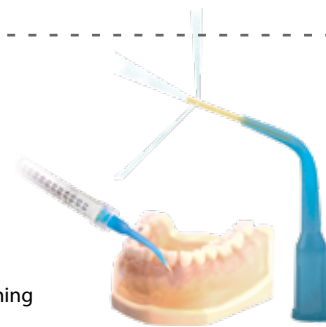


PRODUCT	SKU
● (80) 23ga Secure-Lock™ Vista-Probe™ 1" Bendable Irrigating Tips	314623-2
● (80) 27ga Secure-Lock™ Vista-Probe™ 1" Bendable Irrigating Tips	314627-2
● (80) 30ga Secure-Lock™ Vista-Probe™ 1" Bendable Irrigating Tips	314630-2

Pocket-Probe™ Tips

The ideal tip to irrigate perio pockets.

- Soft and flexible 21ga design features a closed end with multiple ports for dispensing medicaments in many different directions
- Allows for a fast and extremely thorough flushing of perio pockets or inter-dental spaces
- Multiple perforations for thorough flushing
- Universal luer-lock hub



E 100



PRODUCT	SKU
(100) Pocket-Probe™ Tips	316102-2

FREE STANDARD SHIPPING ON ORDERS OVER \$400 | CALL TOLL FREE 877.418.4782 OR VISIT VISTAPEX.COM

Tips & Syringes

6cc Dripless Syringes

Features a unique color coded plunger to quickly identify NaOCl, and color coded ring for improved visibility in magnified fields.

- Anti-drip technology automatically aspirates drips
- Greatly reduces the risk of bleach stains, damage to skin, eyes and oral mucosa
- Pre-tipped with 30ga Vista-Probe™ irrigating tips for safe delivery



PRODUCT	SKU
(100) 6cc Dripless Syringes	318060-2

Impression Syringes

Use with our Impression Trays, see page 64.

- Tip bends to 45° angle
- Seamless barrel construction eliminates splitting



PRODUCT	SKU
(50) Impression Syringes	313001-2

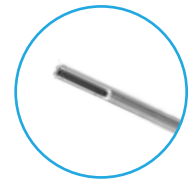
Aspirating Syringes

Ideal for use with 1.8cc cartridges.

- Perfect for warm delivery of anesthetic when used with Vista Apex's 6cc or 12cc Syringe Warmers (see page 24).
- Durable chrome construction
- Autoclavable



PRODUCT	SKU
Astra Style	107001-2
Astra Style Replacement Hub	304001
Cook-Waite Style	107002-2
Cook-Waite Style Replacement Hub	304002



Appli-Vac™ Pre-Tipped Syringes

Ideal for easy irrigation of pockets, fistulas and canals.

- Increase efficiency with our pre-tipped syringes
- Slotted and side-vented for safe irrigation



PRODUCT	3CC SKU	12CC SKU
● (100) 23ga Appli-Vac™ Pre-Tipped 1" Syringes	316133-2	316113-2
● (100) 27ga Appli-Vac™ Pre-Tipped 1" Syringes	316137-2	316117-2
● (100) 30ga Appli-Vac™ Pre-Tipped 1" Syringes	316139-2	316119-2



Vista-Probe™ Pre-Tipped Syringes

Ideal for easy irrigation of pockets, fistulas and canals.

- Increase efficiency with our pre-tipped syringes
- Closed end, side-port needle



PRODUCT	3CC SKU	12CC SKU
● (100) 23ga Vista-Probe™ Pre-Tipped 1" Syringes	316233-2	316213-2
● (100) 27ga Vista-Probe™ Pre-Tipped 1" Syringes	316237-2	316217-2
● (100) 30ga Vista-Probe™ Pre-Tipped 1" Syringes	316239-2	316219-2



Syringe Caps

For preserving and sealing syringes and materials.

- Fits standard luer-lock syringes



PRODUCT	SKU
(25) Syringe Caps	316910-2



US-12 Utility Syringes

Ideal syringe for surgical site and post-surgical home irrigation.



PRODUCT	SKU
(50) US-12 Utility Syringes	316600-2

SCAN THE QR CODE TO GO DIRECTLY TO EACH PRODUCT LISTING OR VISIT VISTAAPEX.COM TO START YOUR ORDER!

ORDER ANYTIME THROUGH YOUR PREFERRED DEALER

Tips & Syringes

Colored Luer-Lock Syringes

Color-coded for easy identification – no need to pull away from the microscope.

- Increases safety – reduces incidence of syringe swap
- Disposable and non-sterile
- Intended for short term storage of NaOCl



PRODUCT	3CC SKU	12CC SKU
● (80) Red Luer-Lock Syringes	317158-2	317058-2
● (80) Blue Luer-Lock Syringes	317159-2	317059-2
● (80) Yellow Luer-Lock Syringes	317160-2	317060-2
○ (80) White Luer-Lock Syringes	317161-2	317061-2

Luer-Lock Syringes

Ideal for surgical site preparation.

- Textured finger grips to minimize slippage
- Graduated (cc) increments
- Intended for short-term storage of NaOCl
- Disposable, non-sterile



PRODUCT	SKU
(100) 1.2cc Luer-Lock Syringes	316002-2
(100) 3cc Luer-Lock Syringes	316030-2
(100) 6cc Luer-Lock Syringes	316060-2
(100) 12cc Luer-Lock Syringes	316012-2

Versa-Brush™

Ideal for enhanced cleansing of endodontic access cavities and for removing contaminants.

- For cleaning post holes and coronal access openings
- Use with EDTA, see page 26



PRODUCT	SKU
(20) Versa-Brush™	204320-2
(40) Versa-Brush™	204300-2



Stropko™ Irrigators

Used for precise control of air and/or water in any dental procedure (crown, bridge, restorative, endodontic, periodontic, surgical, implant, etc.) that requires irrigation or drying during the process.

- Eliminates splashing with regulated, gentle air pressure
- Enhances micro adhesion
- Accurate, fine stream of water
- Enables air-thinning of deep resin
- Ergonomic and easy to use
- Multi-disciplinary use
- Adapts to most air/water dental syringes



PRODUCT	SKU
2" Original Length	315260-2
<i>Includes: (1) Stropko™ Irrigator 2" length, (5) Blue-Flo™ tips</i>	
3.5" XL Length	315265-2
<i>Includes: (1) Stropko™ Irrigator 3.5" length, (5) Blue-Flo™ tips</i>	

Air/Water Syringe Tips

- Quick-change ready
- Autoclavable
- Durable, stainless steel construction



PRODUCT	SKU
(5) Air/Water Syringe Tips	315375-2
(50) Air/Water Syringe Tips	315385-2

Syringe Tip Covers

For infection control with metal syringe tips.

- Requires no conversion adapters
- Will not impede air or water flow
- Slides over 3-way metal syringes
- Hydrophobic filter adds "suck-back" protection



PRODUCT	SKU
(100) Syringe Tip Covers	301001-2
(250) Syringe Tip Covers	301002-2



FREE STANDARD SHIPPING ON ORDERS OVER \$400 | CALL TOLL FREE 877.418.4782 OR VISIT VISTAPEX.COM



TISSUE MANAGEMENT

Quality tissue management is crucial for accurate impressions. When fluid is present in the sulcus, impression quality suffers, which may require costly reworks. Vista Apex offers a complete line of products to predictably achieve rapid hemostasis.

- Quick-Stat™ FREE
- Quick-Stat™ Gel
- Quick-Stat™ Liquid
- Stat-Pak™ Knitted Retraction Cord
- Stat-Pak™ E+ Braided Retraction Cord With Epinephrine
- Vista-Pak™ Packers
- Impression Trays

Tissue Management

FEATURED PRODUCT



Quick-Stat™ FREE

25% Aluminum Magnesium Chloride Clear Hemostatic Gel

Quick-Stat™ FREE is the first clear tissue management agent with shortened hemostasis time. Additionally, the proprietary surfactant in Quick-Stat™ FREE allows better penetration to more effectively stop sulcular fluid build up. This Astringent Hybrid Technology makes Quick-Stat™ FREE 20% faster than other clear hemostatic agents. For controlling tissue management, especially in the aesthetic zone, Quick-Stat™ FREE is the clear choice.

- Does not leave behind any residue or interfere with bonding
- Ideal for use with self-etch (no rinse) adhesives
- Lower surface tension for improved penetration
- Viscous gel will not flow onto surrounding tissue



PRODUCT	SKU
Standard Kit	504600-2
Includes: (4) 1.2mL prefilled syringes, (8) Stat-Flo™ tips	
Value Pack	504640-2
Includes: (40) 1.2mL prefilled syringes, (50) Stat-Flo™ tips	
Bulk Syringe Kit	504650-2
Includes: (1) 30mL prefilled syringe, (20) Stat-Flo™ tips, (20) 1.2mL empty syringes, (1) docking port	
Bulk Syringe Refill	504660-2
Includes: (1) 30mL prefilled syringe, (1) docking port	



Fast as ferric, without the brown.



Still using the brown stuff?

Stops Bleeding 20% Faster. Costs 30% Less*.

* Internal testing showed Quick-Stat™ FREE stopped bleeding 20% faster than the market leading clear hemostatic agent. The per mL price is 30% less than the market leading clear hemostatic agent at the time of this copyright. © 2021 Vista Apex.



FREE STANDARD SHIPPING ON ORDERS OVER \$400 | CALL TOLL FREE 877.418.4782 OR VISIT VISTAAPEX.COM

Tissue Management

FEATURED PRODUCT

Quick-Stat™ Gel

20% Ferric Sulfate Hemostatic Gel

Used for immediate and profound control of bleeding. This gel works on both hard and soft tissue and is highly effective for the control of bleeding during impressions, restorations, and crown and bridge procedures.

- Will not flow onto surrounding tissue
- Effective tissue management
- Quickly controls sulcular fluids



PRODUCT	SKU
Standard Kit	502804-2
Includes: (4) 1.2mL prefilled syringes, (8) Stat-Flo™ tips	
Value Pack	502800-2
Includes: (40) 1.2mL prefilled syringes, (50) Stat-Flo™ tips	
Bulk Syringe Kit	503550-2
Includes: (1) 30mL prefilled syringe, (20) Stat-Flo™ tips, (20) 1.2mL empty syringes, (1) docking port	
Bulk Syringe Refill	503555-2
Includes: (1) 30mL prefilled syringe, (1) docking port	



Quick-Stat™ Liquid

15.5% Ferric Sulfate Liquid

Quick-Stat™ Liquid is an aqueous based 15.5% Ferric Sulfate solution, which is excellent for soaking retraction cord like Stat-Pak™, eliminating sulcular fluid contamination, aiding gingival retraction and reducing mucous membrane inflammation.

- Achieves tissue management in seconds
- Eliminates sulcular fluid contamination for enhanced bonding
- Decrease costly impression remakes

PRODUCT	SKU
(1) 30mL Bottle	317120-2
(1) 30mL Bulk Syringe	504155-2



SCAN THE QR CODE TO GO DIRECTLY TO EACH PRODUCT LISTING OR VISIT VISTAAPEX.COM TO START YOUR ORDER!

ORDER ANYTIME THROUGH YOUR PREFERRED DEALER

Tissue Management

Stat-Pak™ Knitted Retraction Cord



Used to retract sulcular tissue, protect tissues and arrest sulcular fluid seepage.

- Provides rapid tissue displacement
- Knitted cords are easily packed and stay firmly in place with no fraying or memory
- Conforms to sulcular anatomy with gentle outward force for optimal retraction



PRODUCT	LENGTH	SKU
000 (Black)	100" (245cm)	302611-2
00 (Navy)	100" (245cm)	302612-2
0 (Lavender)	100" (245cm)	302613-2
1 (Light Blue)	100" (245cm)	302614-2
2 (Yellow)	100" (245cm)	302615-2

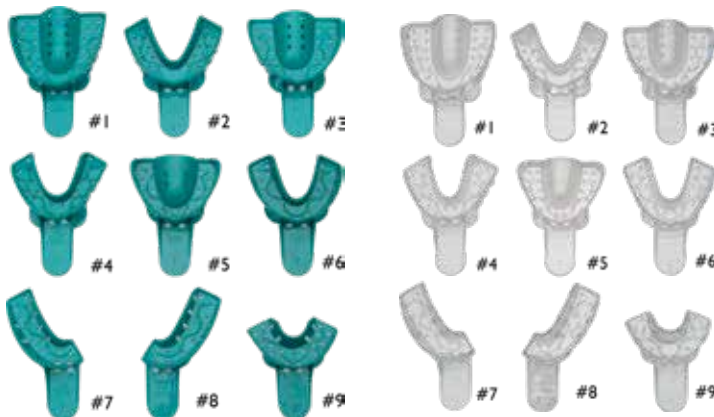
Stat-Pak™ +E

Braided Retraction Cord With Epinephrine

Stat-Pak™ +E Braided Retraction Cord is 100% cotton braided to prevent strand separation and snagging of packing instruments and is impregnated with stabilized Epinephrine solution. Stat-Pak™ +E is designed to suppress bleeding and control sulcular fluids, while conforming to sulcular anatomy.



PRODUCT	LENGTH	SKU
00 (White)	72" (176cm)	302633-2
0 (White)	72" (176cm)	302632-2
1 (White)	72" (176cm)	302631-2



Impression Trays

Available in Green and Clear

- Rigid acrylic with key-way perforations and side wall slots to ensure material retention
- Occlusal surface space minimizer
- Posterior rimlock minimizes secondary flow or gagging
- Finger rest ledges for easier removal from mouth



PRODUCT	GREEN SKU	CLEAR SKU
(12) #1 Large Upper	311001-2	310001-2
(12) #2 Large Lower	311002-2	310002-2
(12) #3 Medium Upper	311003-2	310003-2
(12) #4 Medium Lower	311004-2	310004-2
(12) #5 Small Upper	311005-2	310005-2
(12) #6 Small Lower	311006-2	310006-2
(12) #7 Upper Right/Lower Left	311007-2	310007-2
(12) #8 Lower Right/Upper Left	311008-2	310008-2
(12) #9 Anterior	311009-2	310009-2

Vista-Pak™ Packers

Thin Design Is Ideal
For Placing Knitted
Retraction Cords

- Plain edge: to place and compress cord
- Serrated edge: for ease of use with knitted cord
- Circlet style has 3 packing sides for more efficient circular packing of the prep



PRODUCT	SKU
(1) Standard Plain Edge Packer	302703-2
(1) Standard Serrated Edge Packer	302704-2
(1) Circlet Plain Edge Packer	302701-2
(1) Circlet Serrated Edge Packer	302702-2

FREE STANDARD SHIPPING ON ORDERS OVER \$400 | CALL TOLL FREE 877.418.4782 OR VISIT VISTAPEX.COM



WHITENING

When supervised and done correctly with a proper whitening agent, teeth whitening is one of the simplest and most profitable cosmetic procedures for your dental practice. Testing shows that Fluorescent™ whitening products match the whitening power of other leading brands, at a fraction of the cost.

- Fluorescent™ Whitening Doctor's & Refill Kits
- Fluorescent™ EXpress White
- Liquid Dam
- Dual-Barrel Mixing Syringe Tip

Whitening

Fluorescent™ Teeth Whitening Kit

BETTER whitening power with **LESS** sensitivity!

The Fluorescent™ Teeth Whitening Kit is a clear, viscous, take-home whitening system that comes in a 16% or 22% carbamide peroxide concentration. Additionally, Fluorescent™ contains fluoride to help lower sensitivity. This is a dentist supervised system that is easy to apply and effective for removing many types of discolorations and stains caused by everyday exposure to food, beverages and other lifestyle habits. Also highly recommended for teeth whitening prior to placement of veneers and crowns.



PRODUCT	SKU
16% Fluorescent™ Take-Home Whitening Kit	504300-2
<i>Includes:</i> (8) 1.2mL prefilled syringes with tips, (2) EVA tray sheets 5" x 5" (.040mm), (1) travel case	
22% Fluorescent™ Take-Home Whitening Kit	504400-2
<i>Includes:</i> (8) 1.2mL prefilled syringes with tips, (2) EVA tray sheets 5" x 5" (.040mm), (1) travel case	



PRODUCT	SKU
16% Fluorescent™ Refill Kit	504350-2
<i>Includes:</i> (40) 1.2mL prefilled syringes with tips, packaged in (10) 4-packs	
22% Fluorescent™ Refill Kit	504450-2
<i>Includes:</i> (40) 1.2mL prefilled syringes with tips, packaged in (10) 4-packs	

Fluorescent™ EXpress White

It's easy to whiten teeth in ONE office visit!

Fluorescent™ EXpress White is formulated for FAST whitening in just one office visit. With 35% hydrogen peroxide, EXpress White removes tough stains and discolorations and is recommended for whitening teeth prior to placement of veneers and crowns.

PRODUCT	SKU
35% Fluorescent™ EXpress White Kit	504290-2
<i>Includes:</i> (1) dual-barrel whitening syringe, (1) dual-barrel syringe mixing tip, (2) 1.2mL Desensitizer syringes, (1) 2mL Liquid Dam syringe, (5) 20ga Pre-bent Tips, (2) Micro Brush Applicators, (1) white surgical evac tube, (1) cheek retractor, (1) whitening shade guide	



Liquid Dam

Blue resin barrier for the isolation and protection of soft tissue.

PRODUCT	SKU
Standard Kit	316050-2
<i>Includes:</i> (4) 2mL Liquid Dam syringes, (10) 20ga Pre-bent Tips, (10) Volu-Flo™ Tips	
Refill Kit	316051-2
<i>Includes:</i> (20) 2mL Liquid Dam syringes	



Dual-Barrel Syringe Mixing Tip

To be used with Fluorescent™ EXpress White.

PRODUCT	SKU
(1) Dual-Barrel Syringe Mixing Tip	302007



FREE STANDARD SHIPPING ON ORDERS OVER \$400 | CALL TOLL FREE 877.418.4782 OR VISIT VISTAPEX.COM

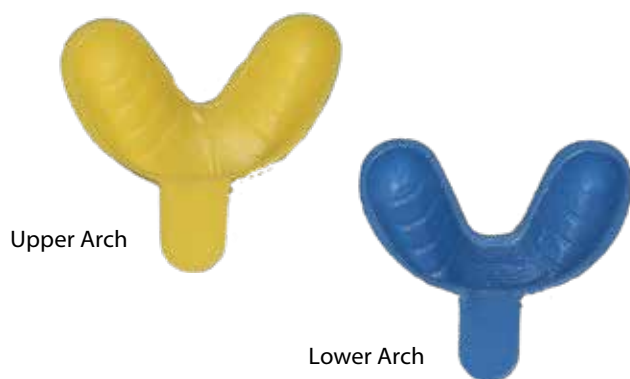


ACCESSORIES

Beyond creating innovative products, the team at Vista Apex knows that sometimes the best way to improve your efficiency is to have access to the best accessories. Take a look through these everyday products that make your life easier!

- Single Arch Fluoride Tray
- Dual Arch Fluoride Tray
- Cotton-Tipped Applicators
- Bendable Brush Applicators
- Micro Applicator Brushes
- Bite Wing Tabs
- Spatulas
- Lab Knives
- Disposable Mouth Mirrors
- Metal Mirror Stems
- Composite Brushes & Brush Handles
- Tongue Cleaners

Accessories



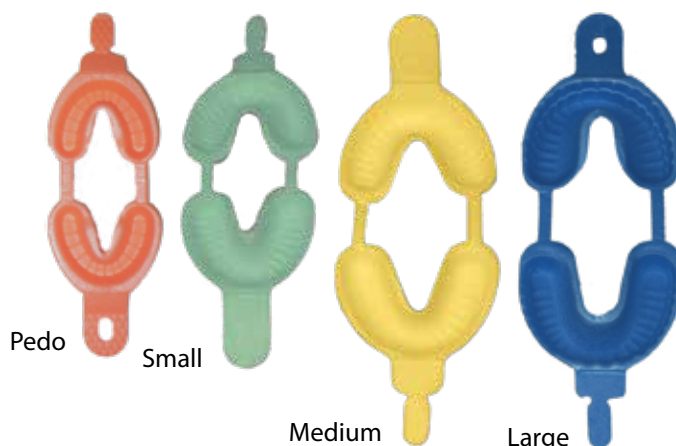
Single Arch Fluoride Trays

Ideal for foam and gel fluoride solutions.

- Flexible trays adapt to the contour of all arches and teeth
- Extended locking grip tabs
- Color coded for easy identification



PRODUCT	SKU
Small Single Arch Fluoride Trays	205101-2
Includes: (100) trays/bag, which include (50) yellow upper arch trays and (50) blue lower arch trays	
Medium Single Arch Fluoride Trays	205102-2
Includes: (100) trays/bag, which include (50) yellow upper arch trays and (50) blue lower arch trays	
Large Single Arch Fluoride Trays	205103-2
Includes: (100) trays/bag, which include (50) yellow upper arch trays and (50) blue lower arch trays	



Dual Arch Fluoride Trays

Ideal for foam and gel fluoride solutions.

- Color coded for easy identification
- Flexible hinge with extended locking grip tabs
- Flexible trays adapt to the contour of all arches and teeth



PRODUCT	SKU
Pedo Dual Arch Fluoride Trays	205204-2
Includes: (50) orange pedo dual arch trays/bag	
Small Dual Arch Fluoride Trays	205201-2
Includes: (50) green small dual arch trays/bag	
Medium Dual Arch Fluoride Trays	205202-2
Includes: (50) yellow medium dual arch trays/bag	
Large Dual Arch Fluoride Trays	205203-2
Includes: (50) blue large dual arch trays/bag	



Cotton-Tipped Applicators

For delivery of all dental liquids and resins.

- Non-sterile virgin cotton
- Tightly woven for lint-free delivery



PRODUCT	SKU
(1000) 3" Applicators	202003-2
(1000) 6" Applicators	202006-2

REGEN™

WORLD'S #1 BIOGLASS ADHESIVE

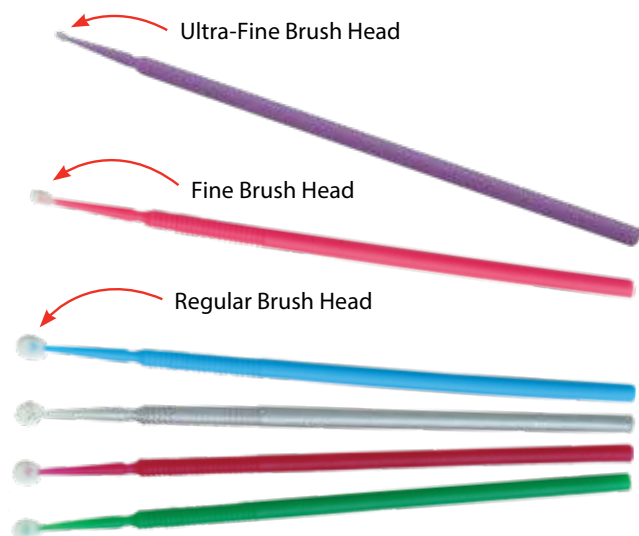
**The Power of Attraction,
Creating Bio-Regenerative Restorations.**

Reduce restorative failure and sensitivity. Construct longer lasting restorations.

See page 8 for more details

FREE STANDARD SHIPPING ON ORDERS OVER \$400 | CALL TOLL FREE 877.418.4782 OR VISIT VISTAPEX.COM

Accessories



Micro Applicator Brushes

For etchants, sealants, bonding agents and hemostatic agents.

- Lint-free brush tip
- Non-absorbent
- Bendable



PRODUCT	SKU
● Ultra Fine (0.5mm) - Lavender	320805-2
Includes: (100) ultra fine lavender micro applicator brushes per box	
● Fine (1.5mm) - Pink	320800-2
Includes: (100) fine micro pink applicator brushes per box	
● Regular (2.0mm) - Blue	320801-2
Includes: (100) regular blue micro applicator brushes per box	
● Regular (2.0mm) - Silver	320802-2
Includes: (100) regular silver micro applicator brushes per box	
● Regular (2.0mm) - Purple	320803-2
Includes: (100) regular purple micro applicator brushes per box	
● Regular (2.0mm) - Green	320804-2
Includes: (100) regular green micro applicator brushes per box	



Bendable Brush Applicators

For applying of etchants, resins and bonding agents.

- Bends to ANY angle and stays in place
- Durable brush with taper-cut bristles
- Adapts easily for lingual or interproximal use
- Bendable handle design is easy to snap apart

Bite Wing Tabs

Identify or pre-tab x-rays.

- Sticks indefinitely to all types of bite wing x-ray surfaces
- Unique dispenser box – peels off each tab automatically



PRODUCT	SKU
(500) Bite Wing Tabs	308001-2



PRODUCT	SKU
Small Pack - Fine Bristles	204001-2
Includes: (144) applicators/box, fine bristle applicators (white)	
Small Pack - Regular Bristles	204002-2
Includes: (144) applicators/box, regular bristle applicators (black)	
Small Pack - Mixed Bristles	204005-2
Includes: (144) applicators/box, consisting of (72) fine bristle applicators (white) and (72) regular bristle applicators (black)	
Large Pack - Regular Bristles	204003-2
Includes: (432) applicators/box, fine bristle applicators (white)	
Large Pack - Mixed Bristles	204004-2
Includes: (432) applicators/box, regular bristle applicators (black)	

SCAN THE QR CODE TO GO DIRECTLY TO EACH PRODUCT LISTING OR VISIT VISTAAPEX.COM TO START YOUR ORDER!

ORDER ANYTIME THROUGH YOUR PREFERRED DEALER

Accessories



Spatulas

Ideal for mixing and spreading.

- Durable stainless steel blades
- Solid rosewood handles
- Premium quality



PRODUCT	SKU
#2R Spatula	105020-2
#3R Spatula	105030-2
#4R Spatula	105040-2
#8R Spatula	105080-2
#10R Spatula	105010-2
#11R Spatula	105011-2



Lab Knives

For all dental environments.

- Solid rosewood or green enamel wood handles
- Stainless steel, razor-sharp knife blade
- Quality construction



PRODUCT	SKU
#3 Knife	106013-2
#6R Knife	106060-2
#6 Knife	106016-2
#7R Knife	106070-2
#7 Knife	106017-2
#8 Knife	106018-2
#12R Knife	106012-2



Disposable Mouth Mirrors

For office examinations and air abrasion.
Made with high quality plated glass.

- Highly reflective ultra-thin plated glass surface enhances imaging
- Ideal for high-volume where interim sterilization is not practical
- Light-weight with ergonomic handle
- Can also function as a cheek retractor
- Size Medium – #4.5
- Mouth mirrors are individually wrapped



PRODUCT	LENGTH	SKU
(60) Medium Disposable Mouth Mirrors	6.25"	307001-2



Metal Mirror Stems

Fits simple stem or cone socket mirrors.

- Resists Corrosion
- Autoclavable

PRODUCT	SKU
Round - Simple Stem	103001-2
Round - Cone Socket	103002-2
Octagonal - Cone Socket	104002-2



FREE STANDARD SHIPPING ON ORDERS OVER \$400 | CALL TOLL FREE 877.418.4782 OR VISIT VISTAPEX.COM

Accessories



Composite Brushes & Brush Handles

Universal style for application of etchants, sealants, adhesives and hemostatic agents.

Composite Brushes

- Tapered tip allows smooth, even application of all liquid types
- DuPont® nylon bristle tips fit all leading brush handles
- Will not slip or dislodge

Brush Handles

- Handle accepts all composite brush styles (including leading brush tips)
- Manufactured in rigid plastic for repeated autoclaving
- Added reach makes application easier



PRODUCT	SKU
Composite Brushes - Fine Bristle	302001-2
<i>Includes: (100) white fine bristle composite brushes per bag</i>	
Composite Brushes - Regular Bristle	302002-2
<i>Includes: (100) black regular bristle composite brushes per bag</i>	
(2) White Brush Handles	302004-2

BE SMOOTH BE TACK-FREE

Seamfree
WETTING RESIN & LUBRICANT

See page 20 for more details



Tongue Cleaners

Great promotional item!

- Durable ridges enhance removal of surface plaque and odor causing bacteria
- Ideal for patient take-home care
- Individually packaged in assorted colors

PRODUCT	SKU
Tongue Cleaners	309001-2
<i>Includes: (72) tongue cleaners per bag, in assorted colors</i>	



SCAN THE QR CODE TO GO DIRECTLY TO EACH PRODUCT LISTING OR VISIT VISTAAPEX.COM TO START YOUR ORDER!

ORDER ANYTIME THROUGH YOUR PREFERRED DEALER



VISTA | APEX

"At Vista Apex education and innovation are the bedrock of our foundation. We're always learning and improving and now we can provide those same opportunities to the clinicians we serve too. Dentistry is an ever-evolving practice, there are always better techniques discovered and better materials formulated to give our patients the best treatment possible."

- Dr. Michael Miyasaki, Chief Dental Officer



PACE
ACADEMY of
GENERAL DENTISTRY
PROGRAM APPROVAL
FOR CONTINUING
EDUCATION

Vista Apex
Nationally Approved PACE Program Provider for FAGD/MAGD credit.
Approval does not imply acceptance by
any regulatory authority or AGD endorsement.
07/01/2021 to 06/30/2023.
Provider ID# 404732

Introduction to Bioactive Materials Utilizing Bioglass

1
CE CREDIT



Dr. John Kanca

FREE

ONLINE COURSE

VISTA | APEX

A Bug's Life

The Importance of Irrigation in
Root Canal Disinfection

1
CE CREDIT



Dr. Rodrigo
Sanchez Cunha

FREE

ONLINE COURSE

VISTA | APEX

Zirconia Masterclass The Masterclass for Zirconia

1
CE CREDIT



Dr. Mike DiTolla

Gary Vaughn



Dr. Michael Miyasaki

FREE

ONLINE COURSE

VISTA | APEX

Lights, Camera, Irrigation:

Understanding the Role Irrigation Protocol
plays in Successful Root Canal Treatment

1
CE CREDIT



Dr. Ryan Walsh

FREE

ONLINE COURSE

VISTA | APEX

Bioactive Materials: Sc-ion-ce & Application Examining Bioactive Restorative Materials

1
CE CREDIT



Nathaniel Lawson DMD, PhD

FREE

ONLINE COURSE

VISTA | APEX

Irrigation Station

The Main Train to Endodontic Success

1
CE CREDIT



Dr. Rico Short

FREE

ONLINE COURSE

VISTA | APEX

ALL COURSES ARE FREE!
Let Us Be Your Trusted Resource
For Continuing Education!



Check Back Often For Our Full List Plus
New Class Offerings! VISTAAPLEX.COM

#	1" Appli-Vac™ Irrigating Tips	57	L	Lab Knives	70
	1" Secure-Lock™ Appli-Vac™ Irrigating Tips	57		Liquid Dam	66
	1" Vista-Probe™ Bendable Irrigating Tips	58		Low-Speed Saliva Ejector	35
	1" Secure-Lock™ Vista-Probe™ Bendable Irrigating Tips	58		Low-Speed Saliva Ejector Valve & Replacement Heads	35
	1/2" Bendable Applicator Tips	54		Luer-Lock Bottle Cap	24
	3/4" Appli-Vac™ Bendable Applicator Tips	55		Luer-Lock Syringes	60
	6cc Dripless Syringes	59	M	Metal Mirror Stems	70
A	Air/Water Syringe Tips	60		Micro Applicator Brushes	69
	Anchor® Core Build-Up Luting Material	21		Micro Aspirators	35
	Anchor® Extrusion Gun	21		Micro-Flo™ Tips	54
	Anchor® Tips	21		MST Universal Pre-Bent Tips	55
	Apical Surgery Ultrasonic Tips	49		MST Visco-Tips™	55
	Appli-Vac™ Pre-Tipped Syringes	59	N	NiTi SuperFlex™ Irrigating Tips	57
	Aspirating Syringes	59	P	Periodontal Piezo Ultrasonic Tips	48-49
	Aspirator/Valve Cleaning Brushes	36		Phasor™ Composite Warming Gun	38
B	Bendable Brush Applicators	69		PinkWave™ QuadWave™ Curing Light	39
	Best-Etch™	12		Pocket-Probe™ Tips	58
	Bite Wing Tabs	69		Porcelain Etch	13
	Blue-Flo™ Tips	54		Pre-Bent Tips	54
	BondSaver	11	Q	Quick-Stat™ FREE	62
C	CanalClean™ Irrigation Kit	27		Quick-Stat™ Gel	63
	Caries Indicator	52		Quick-Stat™ Liquid	63
	Chlor-XTRA™	28	R	RE-GEN™ Flowable Composite Liner	18
	CHX-Plus™	27		RE-GEN™ Self-Etch Adhesive	8
	CHX Restorative	11		RE-GEN™ Pit & Fissure Sealant	18
	Clean & Boost®: Dentin and Enamel Cleanser	12		RE-GEN™ Universal Adhesive	8
	Colored Luer-Lock Syringes	60		Restorative Scaling Piezo Ultrasonic Tips	50
	Composite Brushes & Brush Handles	71	S	Saliva Ejector Replacement Filters	35
	Compule Dispensing Gun	20		Seamfree Composite Wetting Resin & Lubricant	20
	Cotton-Tipped Applicators	68		Simplicity Self-Etch Adhesive System	9
D	DesensiMAX	13, 52		SmearOFF™ 2-in-1	26
	Disposable HVE Screens	36		Sodium Hypochlorite	27
	Disposable Mouth Mirrors	70		Sol-U-Flo™ Applicator Tips	56
	Disposable MTA Carriers	29		Spatulas	70
	Dual Barrel Syringe Mixing Tip	66		Spira-Flo™ Brush Tips	56
E	EDTA 17% Solution	26		Stat-Flo™ Brush Tips	56
	Elasti-Vac™ Tips	58		Stat-Pak™ Knitted Retraction Cord	64
	Endodontic Aspirators	34		Stat-Pak™ E+ Braided Retraction Cord With Epinephrine	64
	EndoUltra® Cordless Ultrasonic Activator	25, 40		Straw Aspirator Kit	33
	Exacta-Flo™ Brush Tips	56		Stropko™ Irrigator	60
	Exquisite Restoration™ Nanofill Composite	19		Surgical Aspirators	32
F	Fill Station™	24		Surgical Evacuation Tubes	32
	Flexi-Glide™ Utility Tips	57		Surgical No-Clog Aspirator	32
	Fluorescent™ Doctor's Kit	66		Surpass® Self-Etch Adhesive System	9
	Fluorescent™ EXpress White	66		Superb Universal Adhesive	8
	Fluorescent Refill Kit	66		Syringe Caps	59
	Fluoride Trays - Dual Arch	68		Syringe Tip Covers	60
	Fluoride Trays - Single Arch	68		Syringe Warmer	24
	Frazier Aspirators	33	T	Therma-Flo™ Composite Warming Kit	38
G	General Scaling Piezo Ultrasonic Tips	47		Titan Flowable Composite	19
H	High-Volume Aspirators	33		Tongue Cleaners	71
	High-Speed Suction Valve	36	U	US-12 Utility Syringe	59
I	IMPACT AIR 45® Accessories	43-44	V	VALIANT® Multispectral Curing Light	39
	IMPACT AIR 45® Highspeed Handpieces	42		Velvet Etch™	12
	Impression Syringes	59		Versa-Brush™	60
	Impression Trays	64		Vista-Blue™	29
	Injectafil® Dual Cure Composite	19		Vista-Cal™	28
	Interface Ceramic Primer	10		Vista-Pak™ Packers	64
				Vista-Probe™ Pre-Tipped Syringes	59
				Volu-Flo™ Tips	54
			Z	ZR-C™ Universal Cleanser	11
				ZR-P™ Universal Primer	10



CALL TOLL FREE **877.418.4782**
OR VISIT **VISTA APEX.COM**



2200 South Street
Racine, Wisconsin 53404

US POSTAGE PAID
PERMIT NO. 0000
INDICIA
PLACEHOLDER

ORDER TODAY!

Vista Dental was founded in 1997 with a mission to provide innovative solutions for Endodontists and General Dentists alike.

In 2019, Vista Dental acquired Apex Dental Materials, an organization responsible for developing gold-standard restorative dentistry products. This partnership created the robust innovation powerhouse that is Vista Apex.

Now in our 25th year serving clinicians, we strive to provide doctors with even more innovation to make their lives easier and provide better patient outcomes.

2200 South Street, Racine, Wisconsin 53404

Toll-Free: (877) 418-4782

Business: (262) 636-9755

Fax: (262) 636-9760

Email: info@vista-dental.com

vistaapex.com

Follow Us:

