



DENTAL MATERIALS & SMALL EQUIPMENT



VISTA | APEX

Call (877) 418-4782 to place your order, or go to vistaapex.com

TISSUE MANAGEMENT

Efficiently Control Patients' Bleeding



QUICK-STAT™ FREE

25% Aluminum Chloride & Magnesium Chloride Clear Hemostatic Gel

- Faster and more effective tissue management to make your impression making and restorative procedures easier without tissue discoloration
- Astringent hybrid technology makes it as effective as ferric-based agents and 20% faster than other clear hemostatic agents
- The proprietary surfactant in Quick-Stat™ FREE allows better penetration to more effectively stop sulcular fluid build up



QUICK-STAT™ GEL

20% Ferric Sulfate Gel



- Provides profound control of bleeding and sulcular fluids during impression making and restorative procedures
- Gel offers control so it won't flow onto surrounding tissue



STAT-PAK™ KNITTED RETRACTION CORD

- Retracts and protects sulcular tissue, and arrests sulcular fluid seepage
- Expands after packing, conforming to sulcular anatomy and is memory free for easy placement and precision



VISTA-PAK™ PACKERS

- Ideal for placing knitted retraction cords
- Plain edge and serrated edge options

Call (877) 418-4782 to place your order, or go to vistaapex.com |

VISTA I APEX

DIRECT RESTORATION

25 Years of Restorative Excellence



VELVET ETCH™

40% Phosphoric Acid Etchant

- Optimized viscosity for precise placement, no slumping and quick removal
- Designed for use with all etching techniques and ideal for selective etching

BEST-ETCH™

37% Phosphoric Acid Etchant



- Viscous solution that stays in place
- Stays in place and rinses off easily leaving no residue



SURPASS® SELF-ETCH ADHESIVE SYSTEM

- Use each bottle of Surpass® for the Gold Standard in dental adhesion
 - The conditioner etches enamel as well as phosphoric acid while eliminating post operative sensitivity
 - The primer completely wets and penetrates the tooth structure to maximize bond strengths and completely seal the surface
 - The bonding resin links the primed surface to all self-cure, dual-cure or light-cure restorative materials



DESENSIMAX

- Proprietary formula disinfects, eliminates sensitivity and inhibits MMP activity
- Provides fluoride at the restorative-tooth interface



SEAMFREE COMPOSITE WETTING RESIN & LUBRICANT

- Designed to remove contaminants from the surface of a tooth prior to bonding
- Enables etching ability and cauterizes minor bleeding
- Boosts single bottle adhesive bond strength by more than 30%



CLEAN & BOOST®: DENTIN & ENAMEL CLEANSER

Offered in Gel or Liquid Formats

- Designed to remove contaminants from the surface of a tooth prior to bonding
- Enables etching ability and cauterizes minor bleeding



Call (877) 418-4782 to place your order, or go to vistaapex.com

VISTA | APEX

RE-GEN™ BIOACTIVE MATERIALS

Create Bio-Regenerative Restorations



Attract

Bioglass attracts and exchanges bioactive ions (Ca^{2+} , PO_4^{3-} , F^-) with the oral environment.



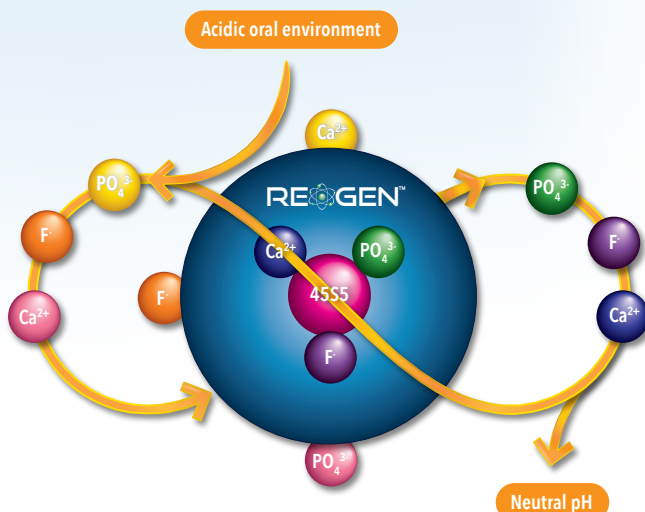
Protect

Continuous pH buffering helps prevent erosion & secondary decay.



Heal

The bioconstructive nature of RE-GEN™ helps close marginal gaps, preserving marginal integrity.



RE-GEN™ UNIVERSAL ADHESIVE

- Provides targeted bioactivity with ionic release at the resin-dental interface
- Stimulates regeneration of hydroxyapatite
- Alkaline pH aids in the prevention of secondary caries



RE-GEN™ SELF-ETCH ADHESIVE

- Get all the benefits of bioactive adhesive, but in a self-etch form



RE-GEN™ FLOWABLE COMPOSITE LINER

- Use with RE-GEN™ adhesives to maximize bioactivity
- Provides unsurpassed compressive strength and toughness



RE-GEN™ PIT & FISSURE SEALANT

- Bioactive properties help protect the tooth and prevent demineralization and decay



INDIRECT RESTORATION

Easy To Use & Reliable

ZR-P™ UNIVERSAL PRIMER

- Provides high bond strengths to zirconia, alumina and metal restorations
- Bond strengths that allow for the delivery of partial coverage indirects
- Enhances bond strengths of other resins



ANCHOR® CORE BUILD-UP LUTING MATERIAL

- Can be used as a core build-up material, cement for pins or posts and luting agent for crowns, veneers
- Incredibly easy to clean up
- Bonds to tooth structure
- Radiopaque and contains fluoride

ZR-C™ UNIVERSAL CLEANSER

- Non-abrasive cleanser for the intaglio surface of prosthetic restorations after intraoral try-in
- Can be used with ALL dental restorative materials
- Ready to use (no shaking required)
- Orange colorant provides an excellent contrast to ensure complete coverage



22% VS 100% EFFECTIVE



Surface with
contaminants



Market
Leader

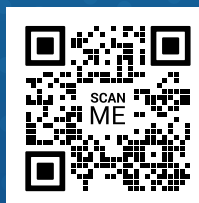


ZR-C™
UNIVERSAL CLEANSER

ZR-C™ does not require shaking of the product before use to avoid separation within the cleanser, unlike the market leader. Simply apply, rinse and dry. Utilizing a binding agent to draw the phosphates from the contaminated surface, ZR-C™ removes significantly more phosphate contamination from zirconia surfaces than the market leader*. Once rinsed, it leaves a pristine surface for bonding or cementation.

Why do 2 times the work for only 22% of the results?

* As tested via x-ray photoelectronspectrophotometry.



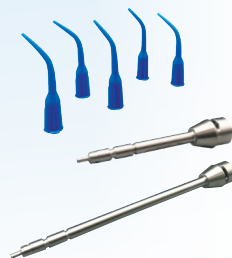
ENDODONTIC PRODUCTS

Ensure More Effective Outcomes



ENDOULTRA™ CORDLESS ULTRASONIC ACTIVATOR

- Improves debridement, disinfection and smear layer removal
- Operates at 40,000Hz compared to 160Hz-190Hz of Sonic activators
- Saves you time and improves treatment outcomes by helping the irrigants reach the approximately 35% of the canal anatomy not touched by the files



STROPKO™ IRRIGATORS

- Used for precise control of air and/or water in any dental procedure that requires irrigation or drying during the process

CHLOR-XTRA™

- Proprietary 6% Sodium Hypochlorite solution with powerful wetting agents and surface modifiers to enable better penetration into the lateral canals
- Designed for faster irrigation, debridement and cleansing



SMEAROFF™ 2-IN-1

- Proprietary EDTA/CHX mix formulated with wetting agents and surface modifiers
- Eliminates need and concern of rinsing after sodium hypochlorite use as it will not form a precipitate



EDTA

- Prepares the dentin walls for better adhesion of sealing materials
- Optimized pH of 8.5 and concentration of 17%



CHX-PLUS™

- Kills multispecies biofilm twice as fast as standard 2% chlorhexidine
- Proprietary chlorhexidine solution with improved depth of cure and kills planktonic bacteria 10x faster



VISTA-CAL™ 35% Calcium Hydroxide Paste

- 12.5pH aqueous Calcium Hydroxide paste used to fill and cleanse root canals
- Radiopaque and contains no more than 35% Calcium Hydroxide
- Use with included MST Visco-Tip™



TIPS & SYRINGES

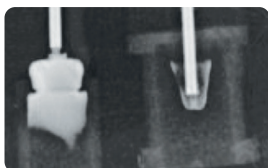
Find A Great Tip For Every Need

DELIVERY TIPS



MST UNIVERSAL PRE-BENT & MST VISCO-TIPS™

- Material saving tips use less material saving you money
- Non-clogging design allows for improved flow and easy, predictable delivery



The xray shows the amount of wasted material in a conventional delivery tip (left) vs. a tip featuring MST (right)



BRUSH TIPS

STAT-FLO™ TIPS

- Precision placement of hemostatic agents
- Curved cannula for optimal visibility
- 19ga tips with padded-end brush to control flow



SPIRA-FLO™ TIPS

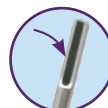
- Nylon brush fiber for controlled delivery of viscous materials, etchants and resins
- Adjustable brush tip fiber length
- Internal spiral channel



ENDODONTIC TIPS

APPLI-VAC™ 1" IRRIGATING TIPS

- Slotted and side vented for safe irrigation
- 23ga, 27ga or 30ga with luer-lock hub
- Also available in 3cc and 12cc Pre-Tipped Syringes



VISTA-PROBE™ 1" BENDABLE IRRIGATING TIPS

- Closed end for side-port delivery to reduce apical pressure
- 23ga, 27ga or 30ga with luer-lock hub
- Also available in 3cc and 12cc Pre-Tipped Syringes



ELASTI-VAC™ TIPS

- Micro-evacuation allows for quick and easy removal of moisture from endodontic canal systems, minimizing the need for paper points
- Flexible tip easily navigates curved canals
- Translucent tip for visualization of contents



SMALL EQUIPMENT

Innovative Technology by Vista Apex

PINKWAVE™ QUADWAVE™ LED CURING LIGHT

- Largest curing area on the market (12.1mm), maximizing coverage
- Decreased shrinkage using four wavelengths - UV, Blue, Red and Near-Infrared
- 3 curing modes - Boost, Standard and Ramp
- Up to 8.5 mm of curing depth for stronger restorations



PHASOR™ COMPOSITE WARMING GUN



- All-in-one composite gun and warmer with multiple heat settings
- Heats composite material to 150°F in less than one minute
- Heated composite flows easier for better adaptation, fewer voids and improved depth of cure
- Fits most composite compules

IMPACT AIR 45® HANDPIECES

- Rear air exhaust handpiece with a unique 45° angled head, allowing for maximum access and visibility to surgical site and high torque
- Designed for use during apicoectomies, osteoplasty, odontoplasty and root resection procedures



*Models shown (L to R):
#401 Highspeed Fiberoptic Handpiece (5 Hole),
#403 Highspeed Handpiece (4 Hole),
#407 Quick Disconnect Highspeed Fiberoptic Handpiece and #408 Quick Disconnect Highspeed Non-Optic Handpiece*

**Vista Apex is the
only authorized
repair facility for the
IMPACT AIR 45®**

*Contact us at 877.418.4782
for all your handpiece
servicing needs*

