

NEW TO  
THE STAGE...

## RE-GEN™ BIOACTIVE ENDOSEALER

RE-GEN™ Bioactive Endo Sealer is a hydraulic, ready-to-use injectable bioactive paste that utilizes moisture naturally present in dentinal tubules to initiate a setting reaction. Endodontic sealers are used in the obturation of root canal systems to achieve a fluid-tight seal throughout the canal including the apical foramen, canal irregularities, and minor discrepancies between the dentinal wall of the root canal and the core filling material.

### Our New Rock Star Endo Sealer

- Employs Bioglass to promote bio-regenerative healing while attracting and exchanging ions that promote remineralization of hydroxyapatite
- **Ready to use:** Injectable, single-component, bioactive paste with smooth flow handling
- **Biocompatible and Osteogenic:** Bioactive root repair material that is effective on non-vital cases
- **Anti-bacterial:** Creates a high alkaline environment to prevent bacteria formation
- **Dimensionally stable:** Low solubility with high wash out resistance
- **A faster set:** Fast and efficient set time of under 1 hour
- Highly Radiopaque
- Cost Effective + Paired with material savings MST tip

- 🧪 **Bioactive: Contains Bioglass**
- ➡️ **Superior Strength**
- ⚙️ **Less Shrinkage**
- 🕒 **Quicker Set Time**
- 💰 **The Right Price**



**Use with our MST Tips!** Conventional application tips trap a significant amount of material inside, sometimes causing more material to be wasted in the tip than is used clinically.

# What makes RE-GEN™ Bioactive Endo Sealer Better?

	RE-GEN™ Bioactive Endo Sealer	EndoSequence BC Sealer	Edge Bioceramic	AH Plus Bioceramic
<b>Manufacturer</b>	Vista Apex	Brassler	EdgeEndo	Dentsply Sirona
<b>Radiopacity (mm Al)*</b>	8.1	7.5	6.0	9.0
<b>Root Canal Sealer Contents</b>	2g Syringe with 20 MST Visco Tips	2g Syringe with 15 Tips	2g Syringe with 15 Tips	3g Syringe with 20 Tips
<b>Set Time (min)*</b>	60	> 120	660	> 120
<b>Solubility (%)*</b>	1.0%	2.9%	< 3%	1.4%
<b>Kit Cost</b>	\$85.00	\$160.00	\$128.88	\$150.00

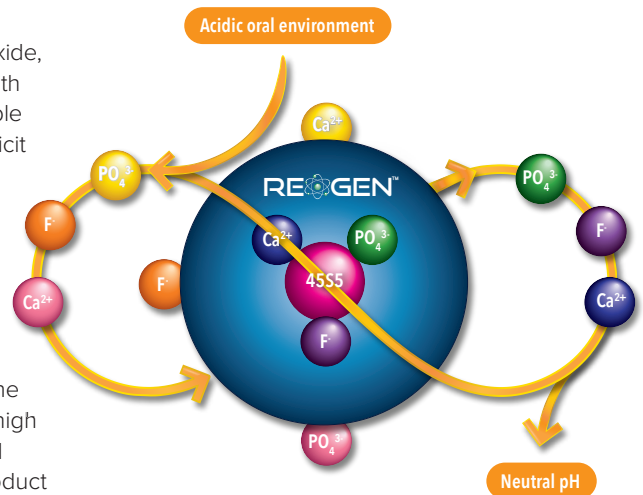
\*Internal data or from literature research

## What is Bioglass 45S5?

Bioglass 45S5 is a biomaterial that is composed of silicon oxide, sodium oxide, calcium oxide, and phosphorus pentoxide. When Bioglass 45S5 interacts with biological environments (e.g. oral environment), it releases and attracts soluble ions, such as calcium and phosphate, in the physiological environment to elicit hydroxyapatite formation. The use of Bioglass 45S5 has been clinically proven and backed by over 50 years of medical and orthopedic clinical use for remineralization of hydroxyapatite materials (e.g. bone and teeth).

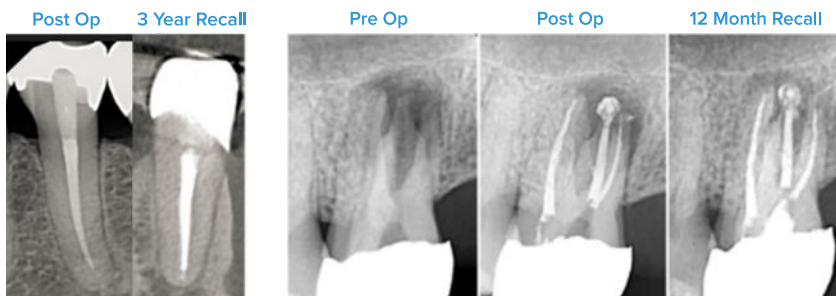
### RE-GEN™ Success

With our success utilizing Bioglass 45S5 in our RE-GEN™ restorative product line, we want to continue this success with our RE-GEN Bioactive Endosealer. Our Endosealer was designed and developed to contain all the highly desirable root canal sealer characteristics that includes bioactivity, high radiopacity, high alkalinity, quick set time, high flowability, low solubility, and creating a hermetic seal. Vista Apex is excited to expand the RE-GEN™ product line in the endodontic space to now provide continuous protection from apex to enamel.



## Post-Op Radiographs

Looking at the premolar post-op versus 3 year recall, it's clear we don't see any wash out or change in the sealer over time.



## Extraordinary Sealer at an Extraordinary Price!

### 504753 Kit Contents:

- + 1 x 2g prefilled syringe
- + 20 x MST Visco-Tips™ Polymer

### 504754 Kit Contents:

- + 1 x 2g prefilled syringe
- + 20 x MST Visco-Tips™ Stainless Steel



**Order Today!**  
**SCAN HERE**  
to Learn More